



Union A6 Program & Concept Deliverable

Project Deliverable
March 25, 2022

Union A6 User Groups

NSFP: New Student & Family Programs

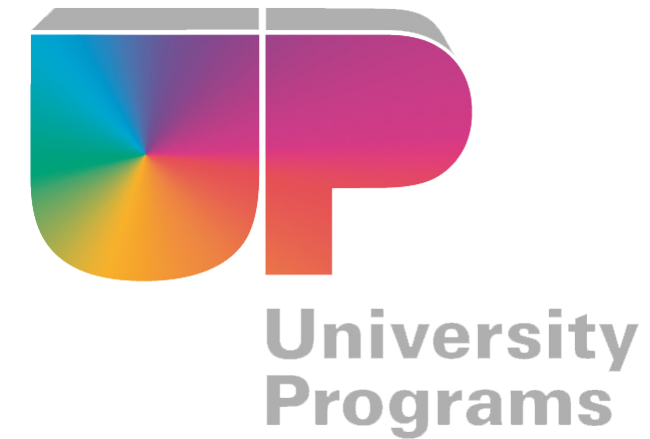
Programs:

- R.O.C.K. Camp
- Parent & Family Programs
- HOG W.I.L.D. Welcome Weeks
- UARK Cardinal Nights
- Leadership Programs
- First Year Initiatives

OSA: Office of Student Activities

- ASG: Associated Student Government
- Distinguished Lectures
- GPSC: Graduate Professional Student Congress
- Headliner Concerts
- RSO: Registered Student Organizations
 - SOOIE
- Student Travel Information
- UP: University Programs

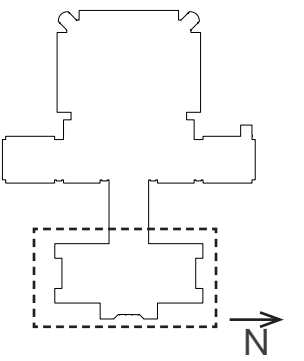
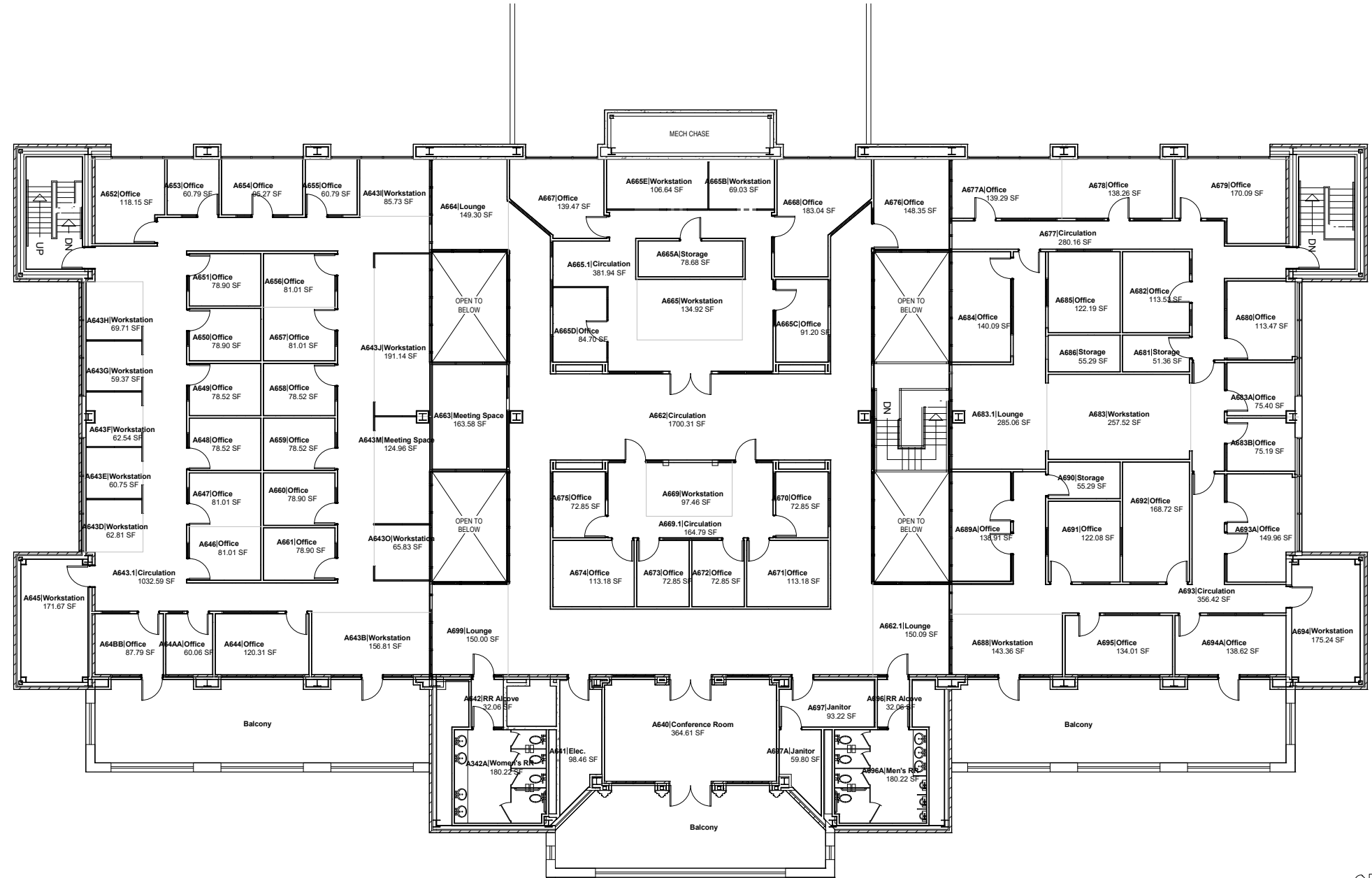
SADC: Student Aff Development & Communication



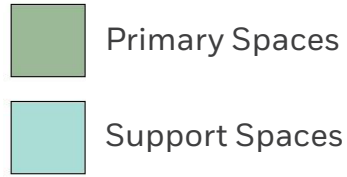
Existing Space

Location: Student Union east building level 6 space.

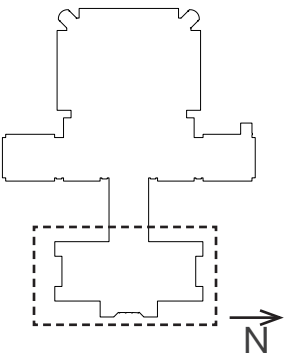
Use: Currently occupied by staff and students with multiple organizations.



Existing Space Overall Use



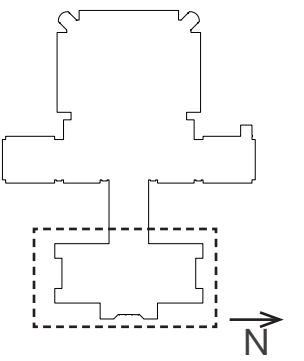
Existing A6 Floor ARKU Program		
Primary Spaces	Squ. Ft.	%
Circulation	3,975 sf	31%
Conference Room	368 sf	3%
Lounge/Shared Space	660 sf	5%
Meeting Space	293 sf	2%
Offices	4,716 sf	37%
Storage	240 sf	2%
Workstations	1,976 sf	15%
Subtotal	12,228 sf	95%
Support Spaces		
Elec.	99 sf	1%
Janitor	150 sf	1%
Men's RR	180 sf	1%
RR Alcove	64 sf	0%
Women's RR	180 sf	1%
Subtotal	673 sf	5%
Grand Total	12,901 sf	100%



Existing Space Breakdown

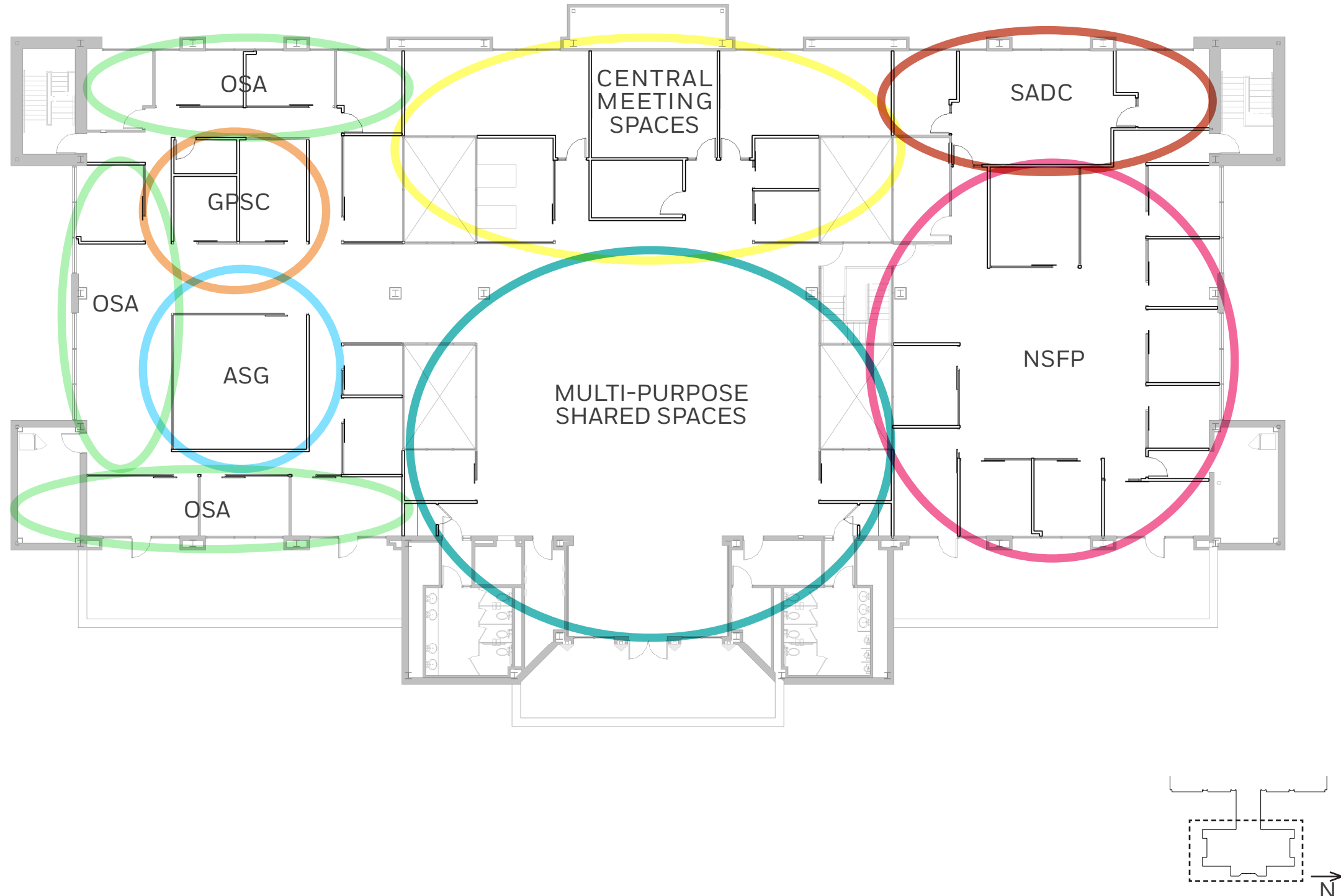
Existing organizations locations
(Per RUSS data)

- ASG (Associated Student Government)
- CCE (Center for Community Engagement)
- Central Shared Spaces
- NSFP (New Student & Family Programs)
- OSA (Office of Student Activities)
- RSO (Registered Student Organizations)
- SADC (Student Aff Development & Communication)



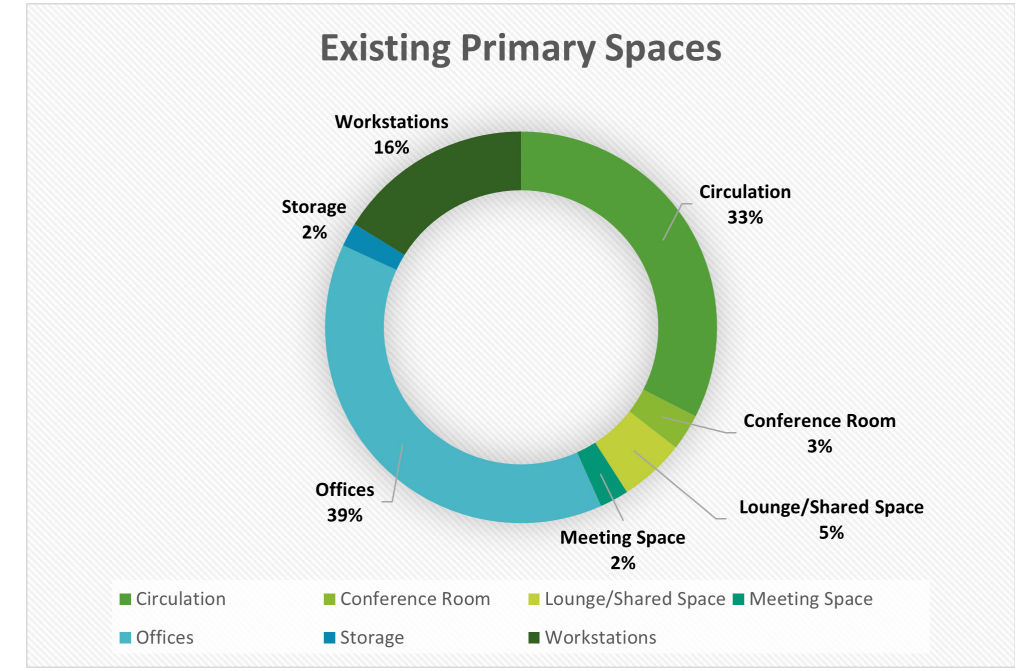
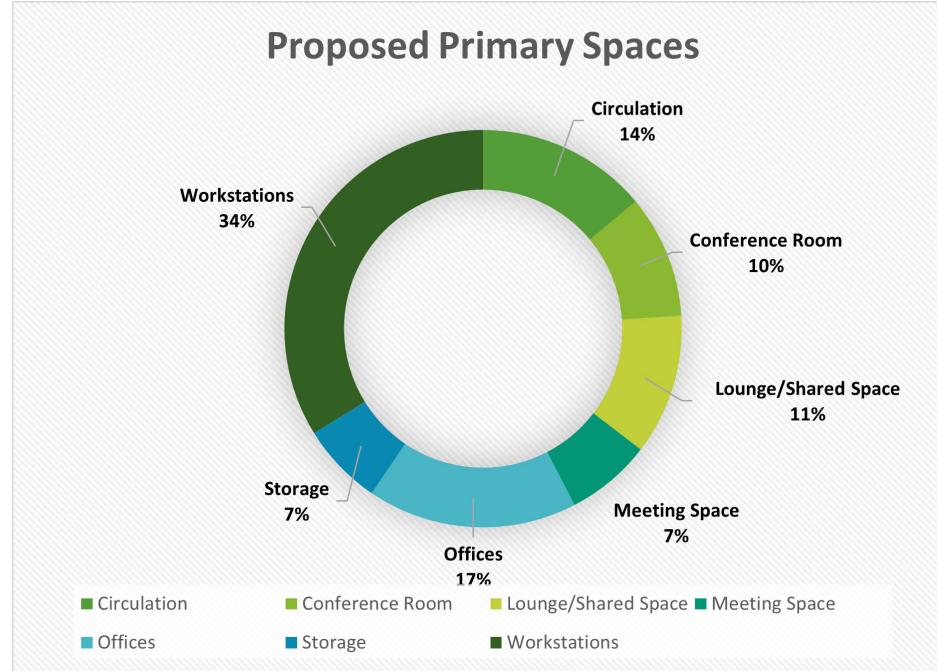
Proposed Program Breakdown

A6 Floor ARKU Program		
Qty	Position	Squ. Ft.
OSA		
1	Director	160
1	Associate Director	160
1	Assistant Director	130
1	Assistant Director	120
1	Office Manager	120
1	Fiscal Support Specialist	120
1	Fiscal Support Specialist	120
5	Graduate Assistants (75sf x Qty)	375
1	Work/Supplies/Copier Room	100
2	Meeting Room	230
2	Storage	220
		1,855 sf
Multi-Purpose		
	UP Collaboration Space & SOOIE Space	800
	RSO Collaboration Space	800
	Programming Resource Room	200
	Break area with kitchenette/eating space	400
	Lockers & Cabinet Storage	200
2	Meeting Rooms (85sf x Qty)	170
		2,570 sf
ASG		
8	ASG Office Workstations	450
1	Meeting Room	75
		525 sf
GPSC		
2	GPSC Office Workstations	160
1	Meeting Room	150
		310 sf
NSFP		
1	Director	160
1	Associate Director	130
1	Assistant Director	120
1	Assistant Director	120
1	Assistant Director	120
1	Assistant Director	120
1	Office Manager	120
1	Student Clerial Work Area/entry area	100
5	Graduate Assistants	210
6	Student Work/Collaboration Area (60sf x Qty)	360
3	Student Graphic Design Work Area (60sf x Qty)	180
1	Lounge Collaboration Space	800
1	Storage (more if possible)	175
2	Meeting/Consultation Room	227
1	Staging Area/Copier & Supplies Room	140
		3,082 sf
Central		
	Large Meeting room (12-18 People)	390
	Meeting room (12-18 People)	365
	Meeting room (8-12 People)	320
	Storage/grab-n-go/pick-up	126
	Reception Desk (Direct and easy access to storage)	120
2	Small Meeting Room (75sf x Qty)	150
		1,471 sf
SADC		
1	Executive Director	150
1	Content Management Specialist	120
2	Graduate Assistants (shared)	120
5	Studio / Graphic Designers	320
		710 sf
	Subtotal	10,523 sf
	Circulation (area based on existing)	1,705 sf
	Primary Space Total	12,228 sf
	Support Spaces	672 sf
	Grand Total	12,900 sf



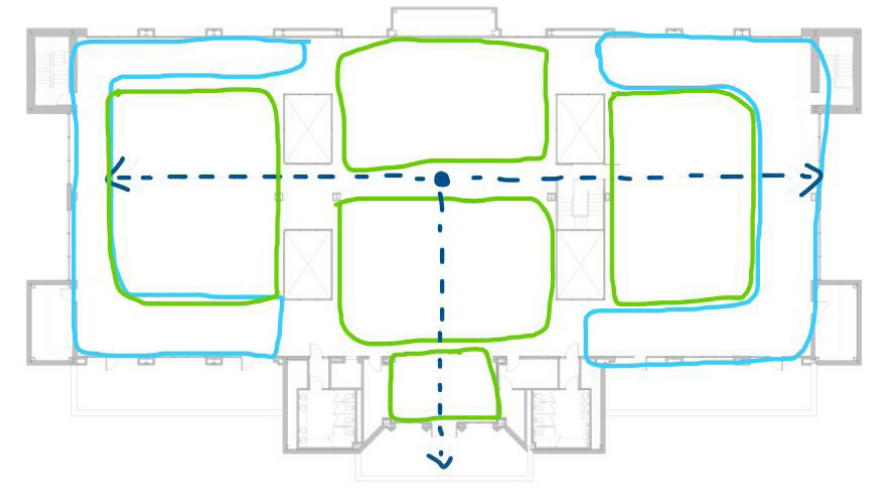
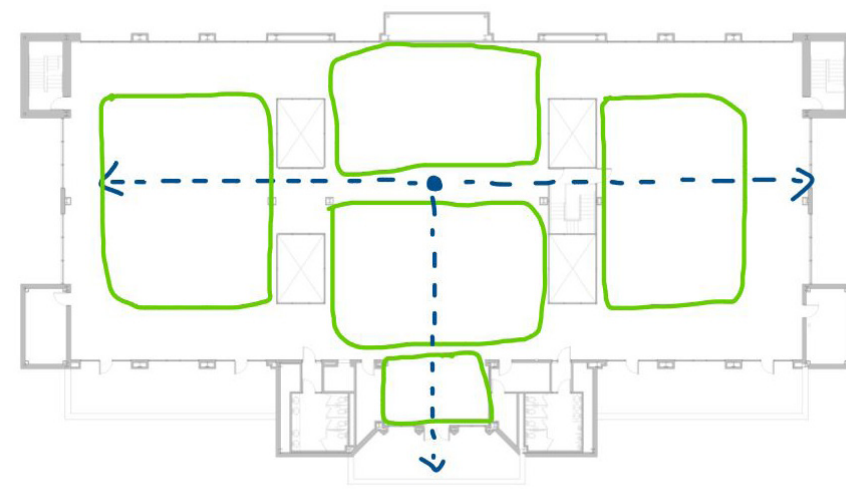
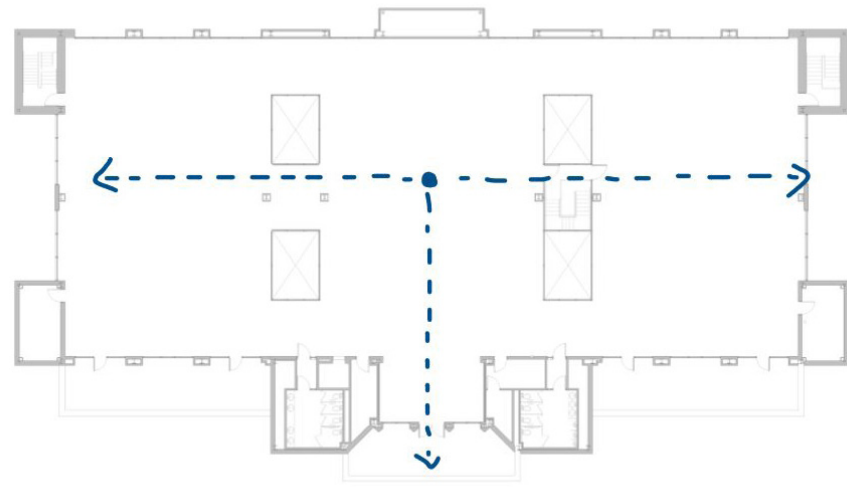
Program Comparison

A6 Floor ARKU Program				
Primary Spaces	Proposed Program		Existing Program	
	Area	%	Area	%
Circulation	1,705 sf	13%	3,975 sf	31%
Conference Room	1,225 sf	9%	368 sf	3%
Lounge/Shared Space	1,400 sf	11%	660 sf	5%
Meeting Space	852 sf	7%	293 sf	2%
Offices	2,090 sf	16%	4,716 sf	37%
Storage	821 sf	6%	240 sf	2%
Workstations	4,135 sf	32%	1,976 sf	15%
Subtotal	12,228 sf	95%	12,228 sf	95%
Support Spaces				
Elec.	99 sf	1%	99 sf	1%
Janitor	150 sf	1%	150 sf	1%
Men's RR	180 sf	1%	180 sf	1%
RR Alcove	64 sf	0%	64 sf	0%
Women's RR	180 sf	1%	180 sf	1%
Subtotal	673 sf	5%	673 sf	5%
Grand Total	12,901 sf	100%	12,901 sf	100%



Concept

Project Vision Statement: The Center for Student Organizations will be a place that fosters collaboration and connection between students and student organizations on campus increasing involvement and becoming a space where these organizations can grow and cultivate successful activities on campus.



Visibility & Connection

- Clear site lines
- Ability to see where groups are located
- Ease of movement and travel

Collaboration & Gathering

- Hubs for student groups
- Central location for meeting spaces
- Open and flexible areas

Private & Support

- Anchor permanent spaces at perimeter
- Keep focus on the central spaces

Concept Floor Plan

- OSA (Office of Student Activities)
- Multi-purpose Shared Spaces
- ASG (Associated Student Government)
- GPSC (Grad Professional Student Congress)
- NSFP (New Student & Family Programs)
- Central Meeting Spaces
- SADC (Student Aff Development & Communication)

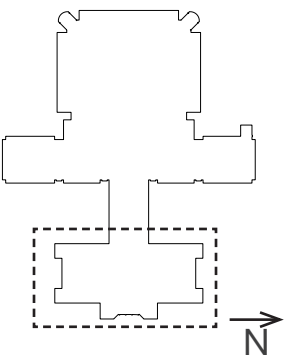


New Floor Plan

- OSA (Office of Student Activities)
- Multi-purpose Shared Spaces
- ASG (Associated Student Government)
- GPSC (Grad Professional Student Congress)
- NSFP (New Student & Family Programs)
- Central Meeting Spaces
- SADC (Student Aff Development & Communication)



1 Level A6 - Overall Floor Plan



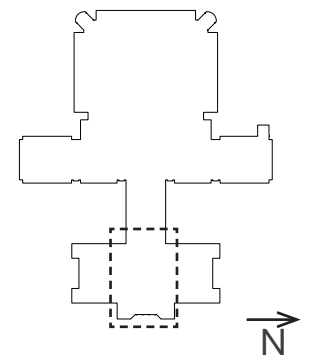
Central Space

Area = 4,750 sf + 400 sf Break room
 Total = 5,150 sf

Program: Consists of meeting spaces and an open floor plan with workstations and informal gathering places for student workers and groups to meet. The break room is located adjacent the balcony looking over the quad.



1 Level A6 - Center Space



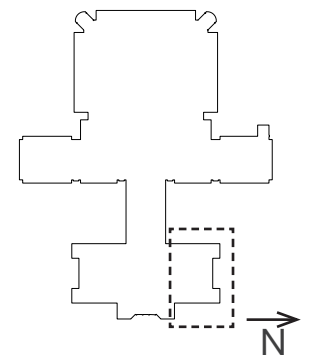
North Space

Area = 3,900 sf

Program:

SADC has two private offices and an open floor area for workstations adjacent exterior windows.

NSFP has private offices and meeting rooms located around the perimeter of the space with an open area in the center for informal gathering and workstations.



South Space

Area = 3,900 sf

Program:

ASG Offices and GA workstations located at perimeter of the space. GA's locate near center with other student work areas and part of the visible connection to the central space.

GPSC workroom and informal meeting room located in the center and adjacent light wells near the central space.

ASG large workspace in the center with a meeting room adjacent the light wells.

