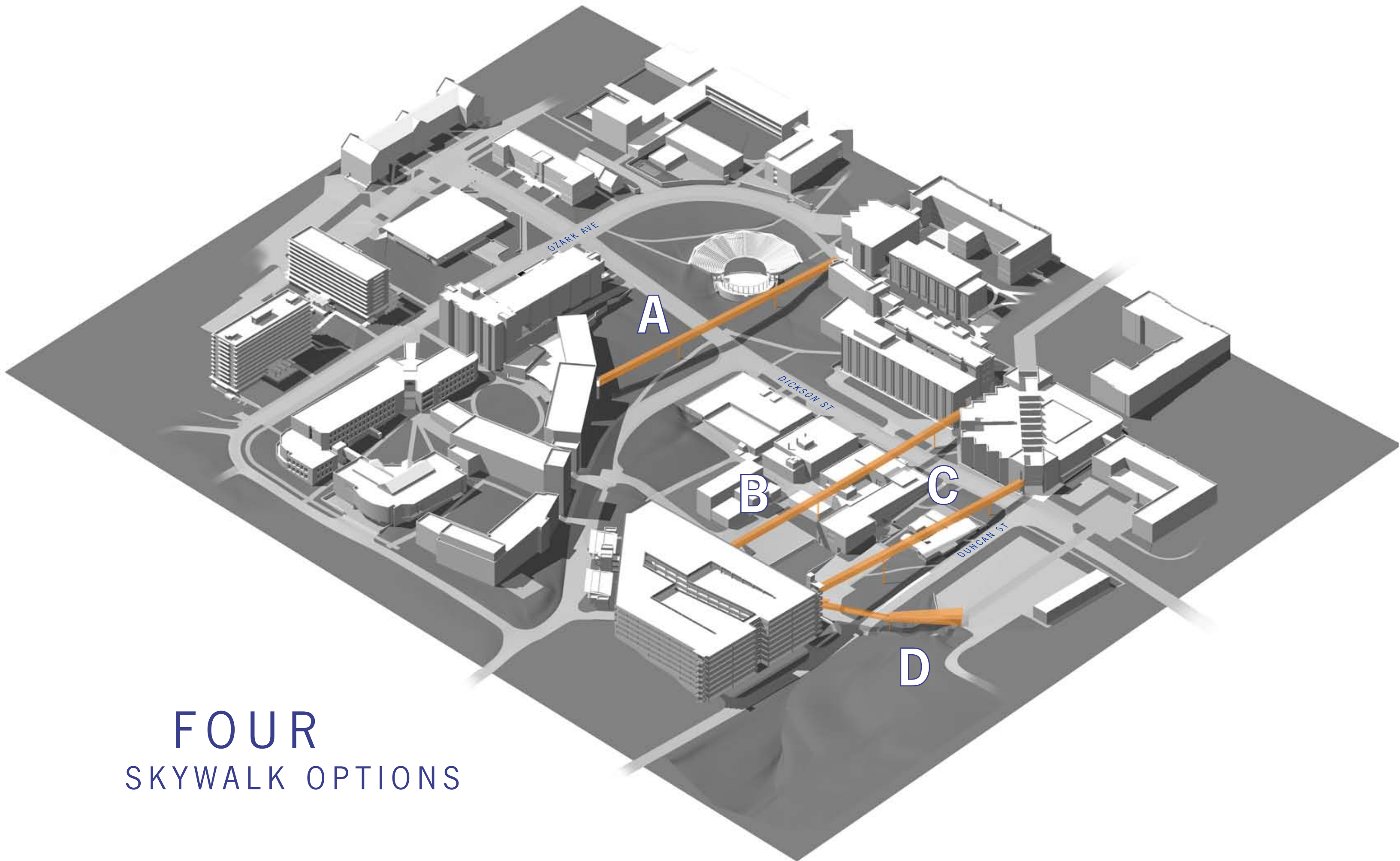


south campus
SKYWALKS



FOUR
SKYWALK OPTIONS

a fayetteville tradition
planned views



methodist church



old main



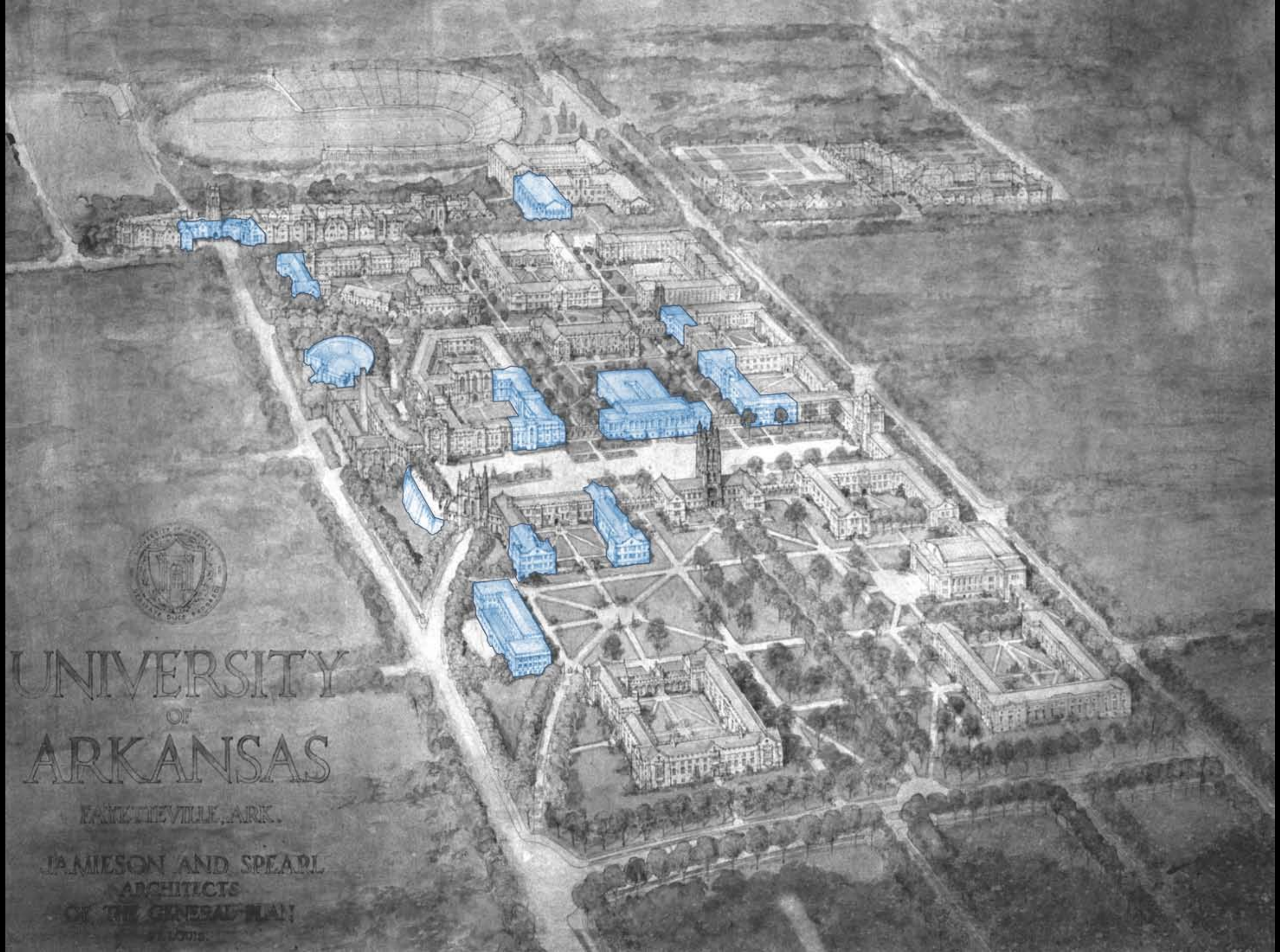
courthouse



columned house



dickson street axis



UNIVERSITY OF ARKANSAS

FAYETTEVILLE, ARK.

JAMIESON AND SPEAR,
ARCHITECTS
OF THE GENERAL PLAN
1901



UNIVERSITY OF ARKANSAS

FAYETTEVILLE, ARK.

JAMIESON AND SPEAR,
ARCHITECTS
OF THE GENERAL PLAN
1901

long skywalks
examples



S 3rd St

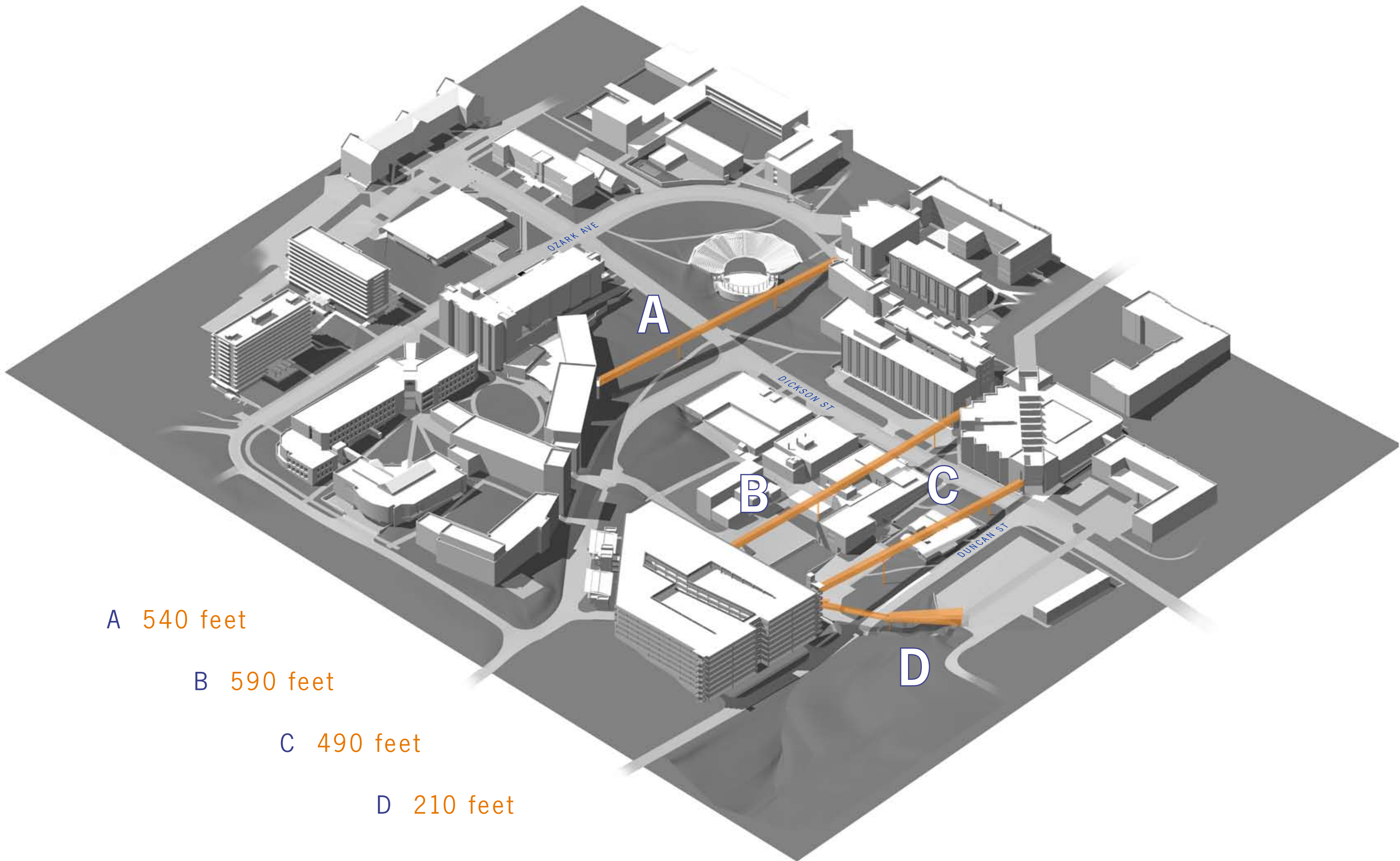
S 3rd St

ONE WAY

ONE WAY

ALMA MATER





A 540 feet

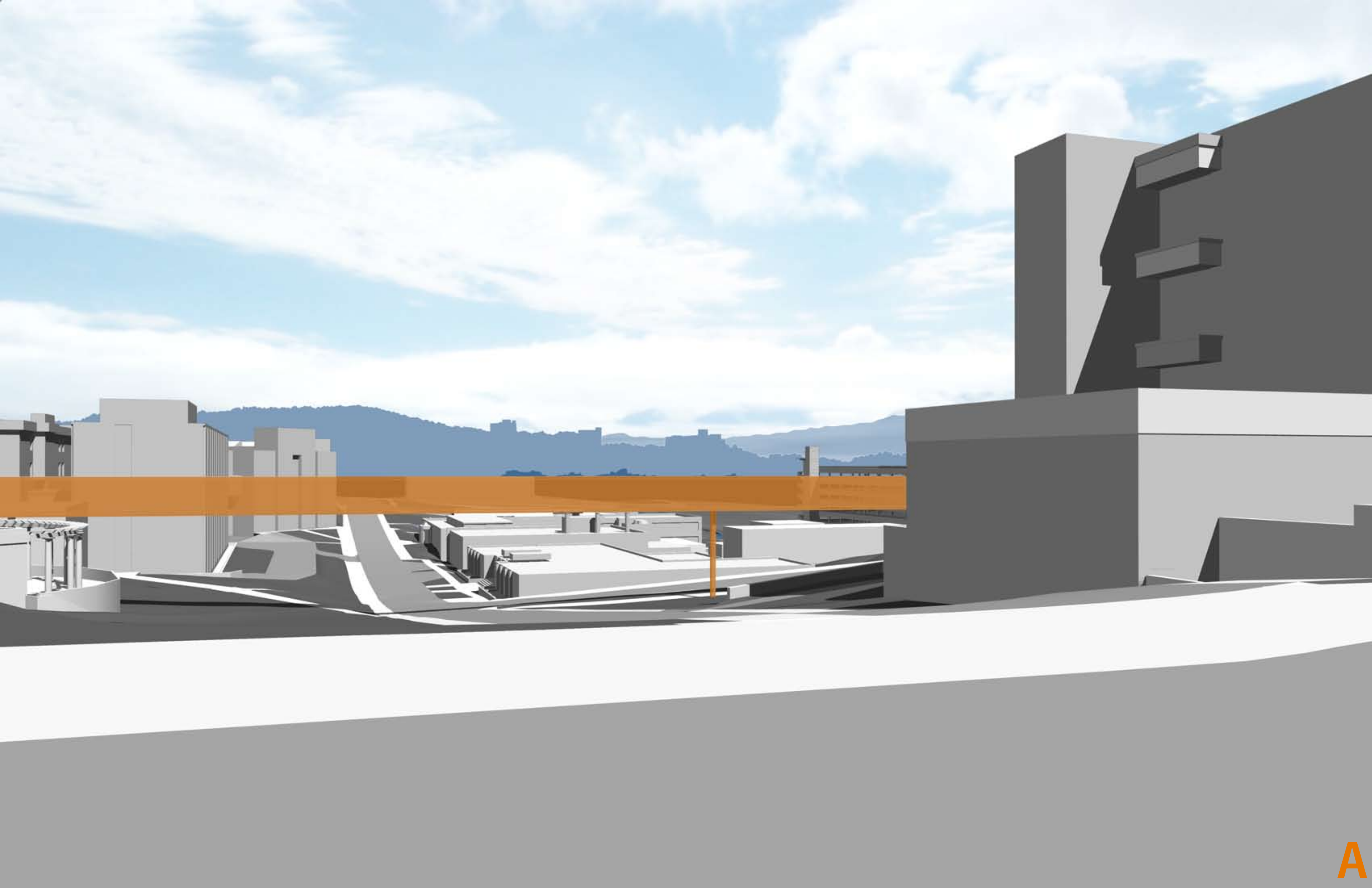
B 590 feet

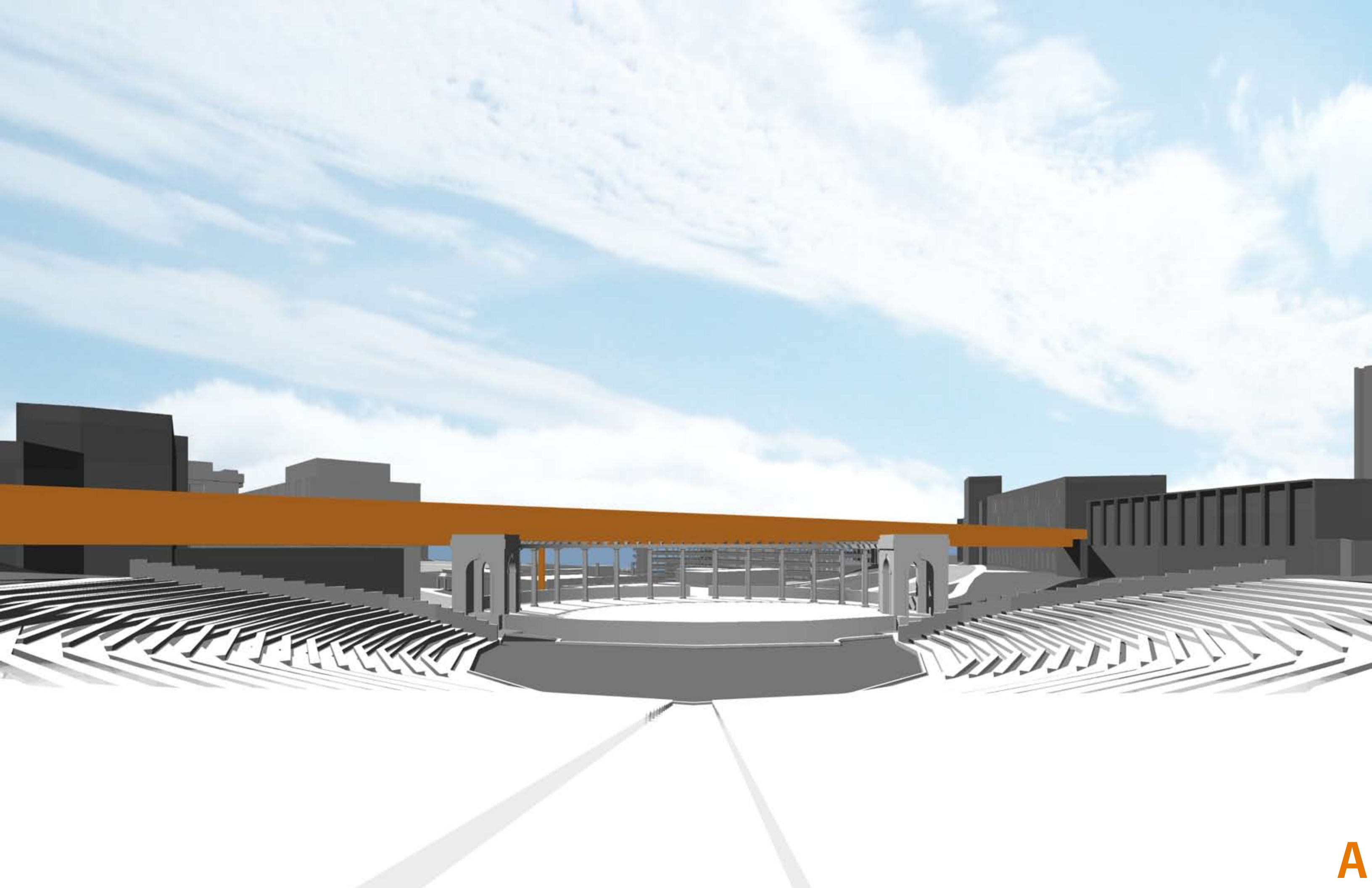
C 490 feet

D 210 feet

skywalk A

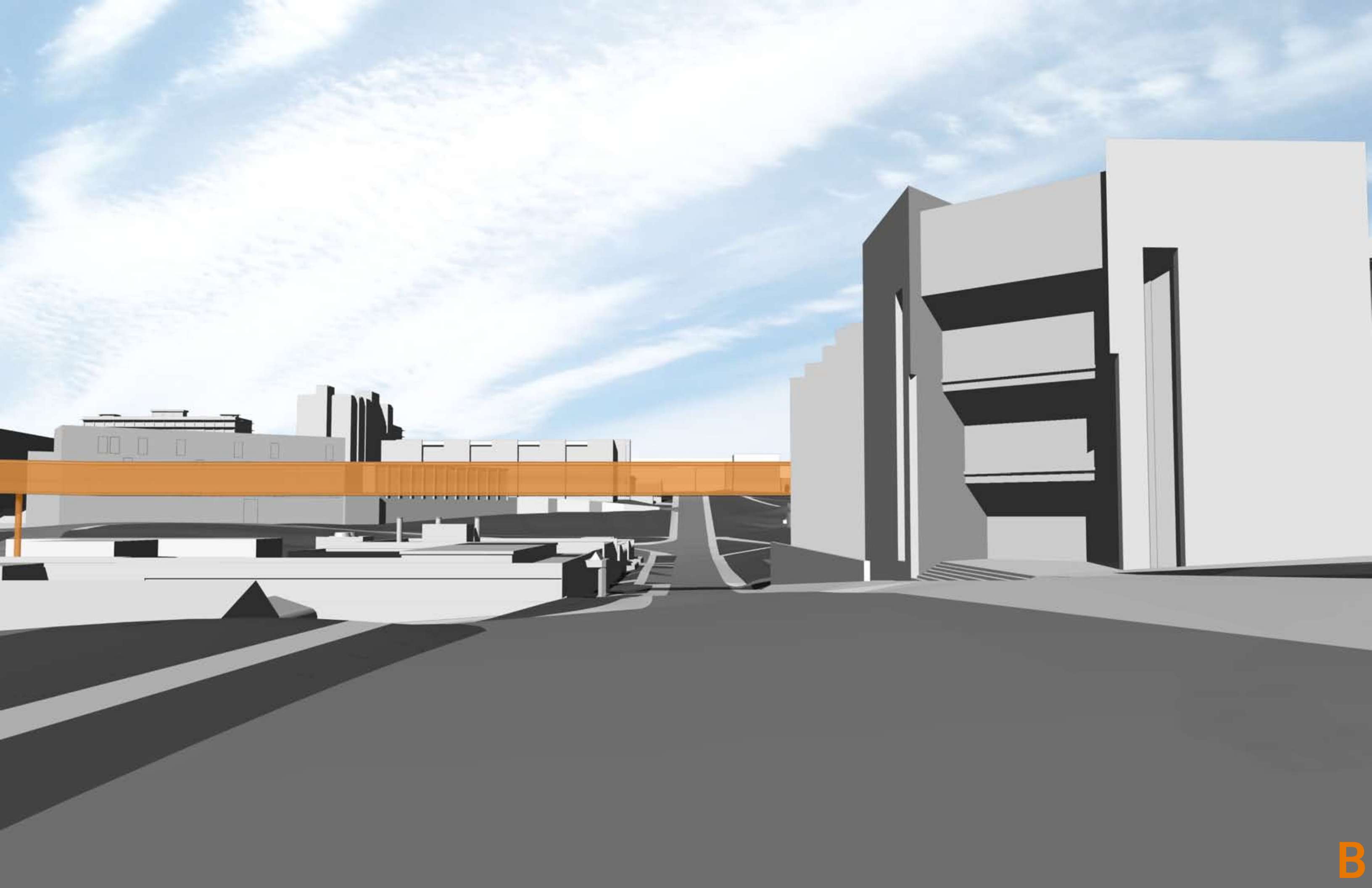


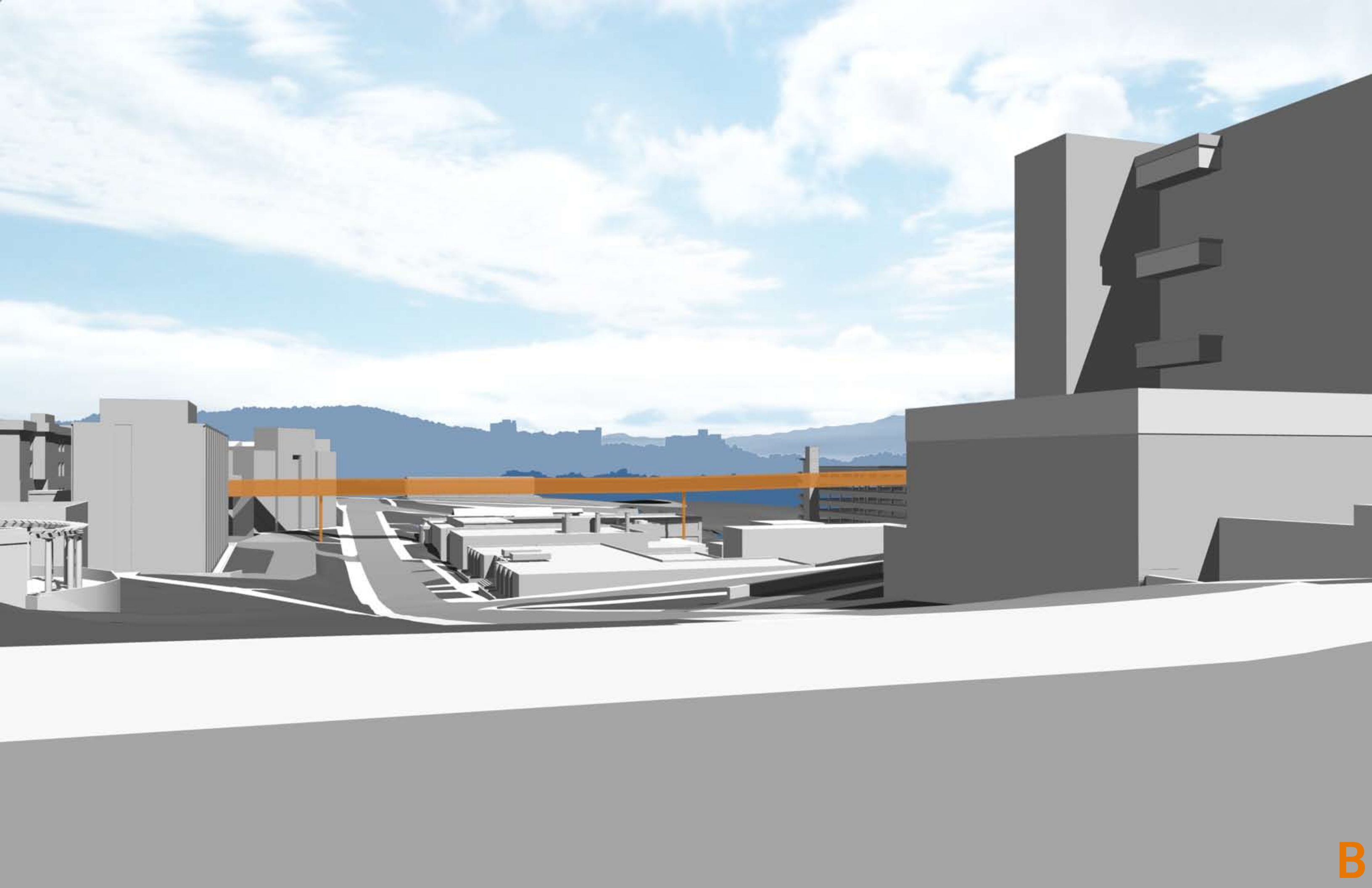


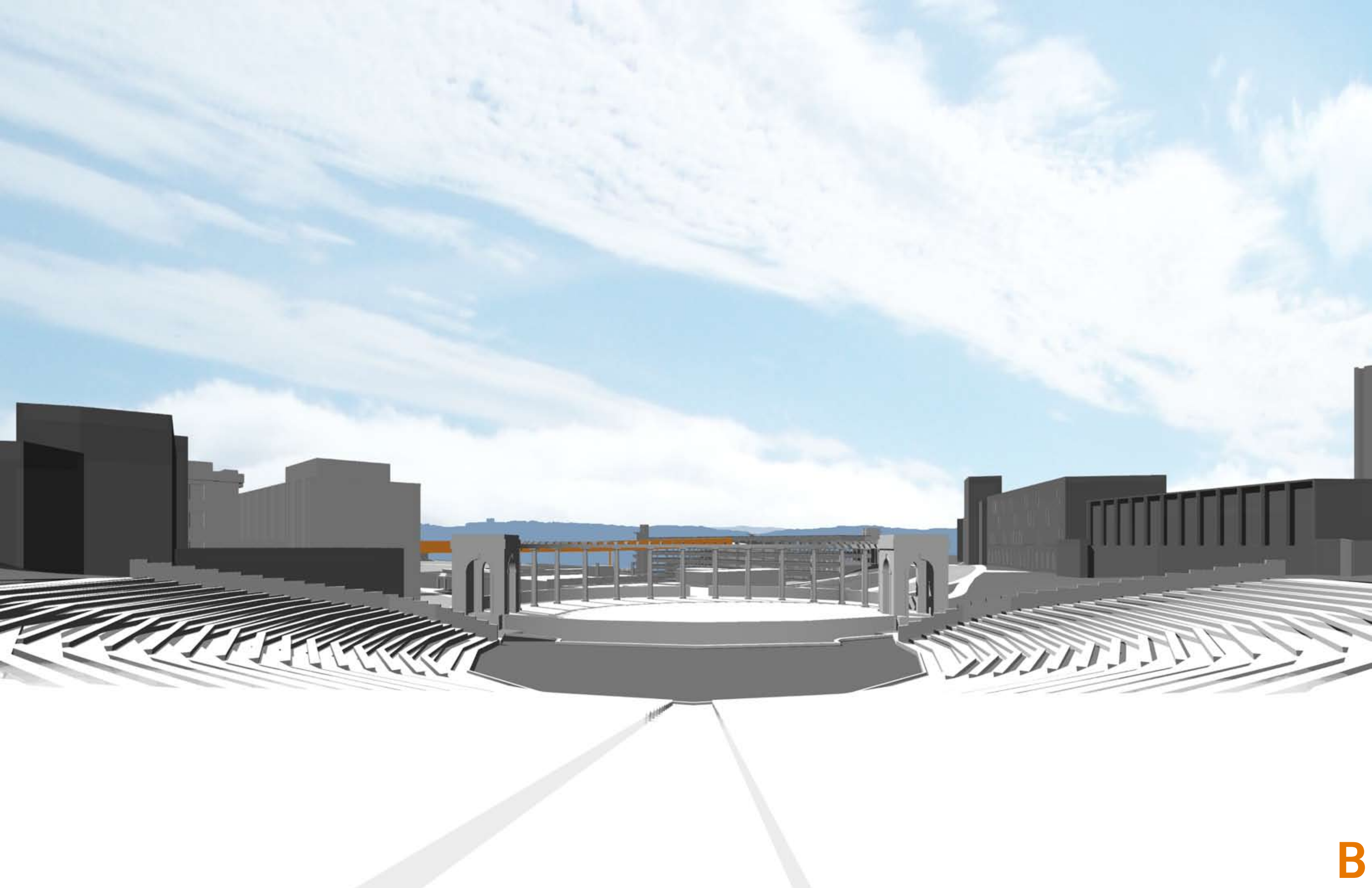


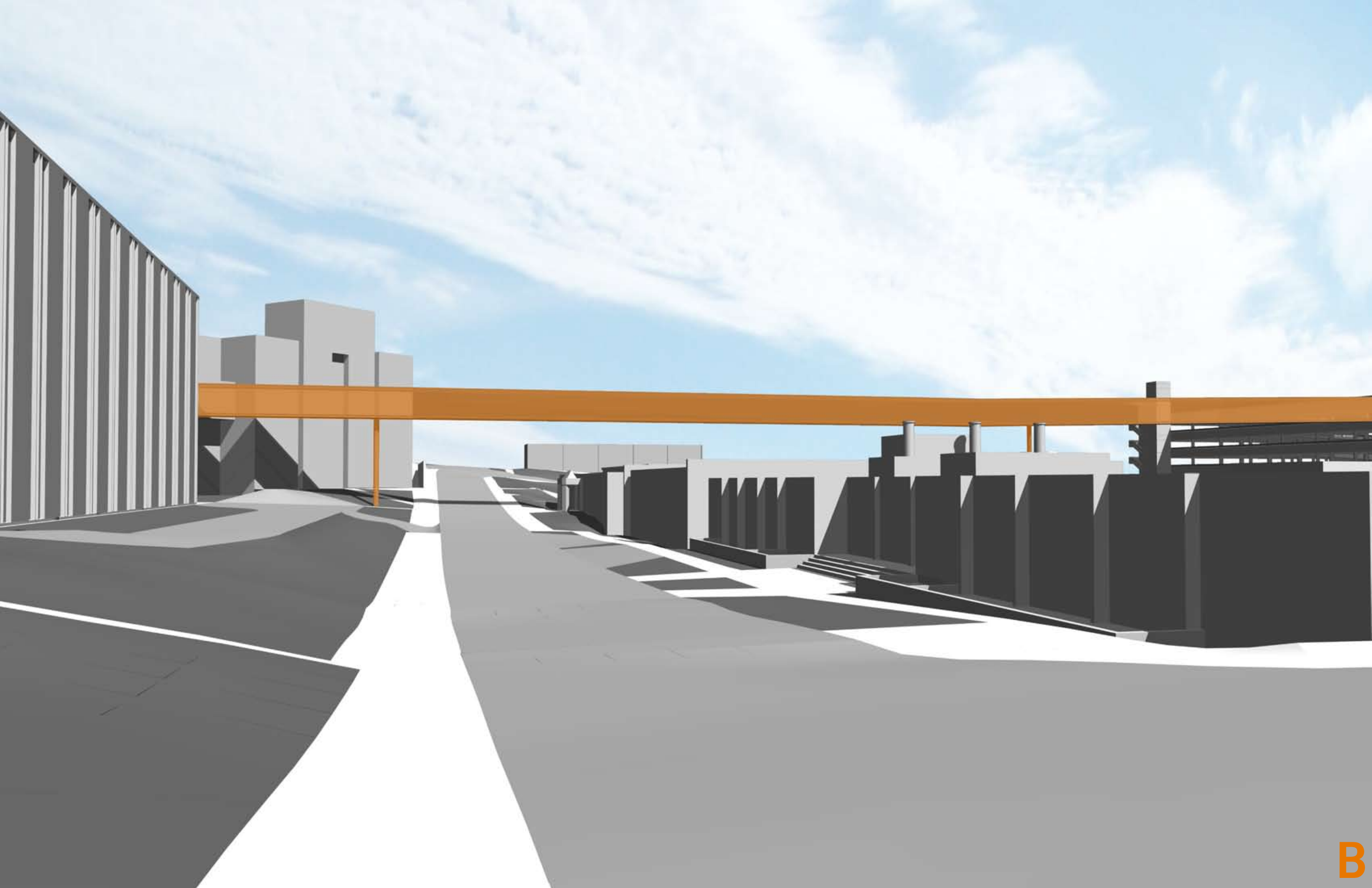


skywalk B

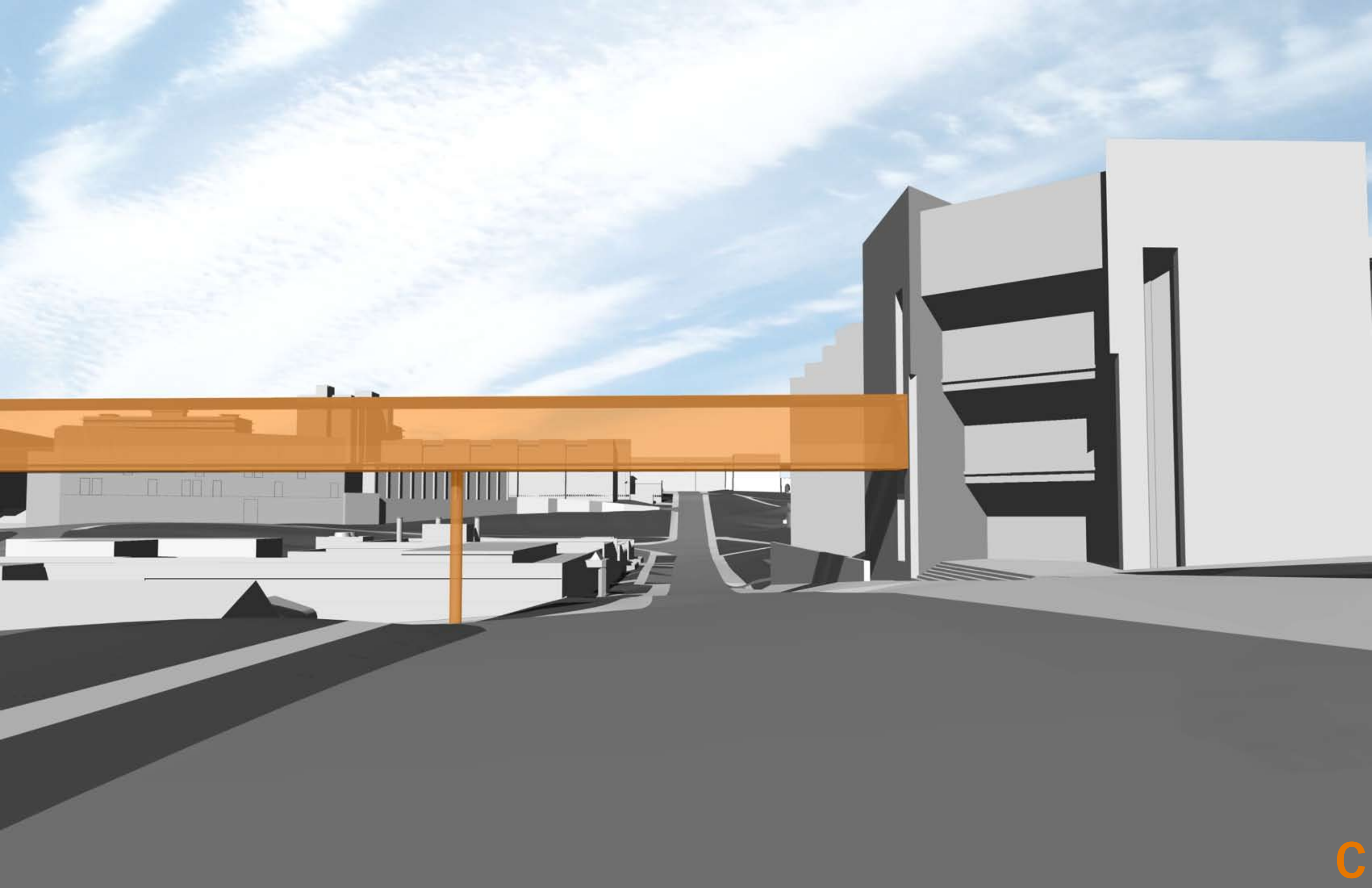


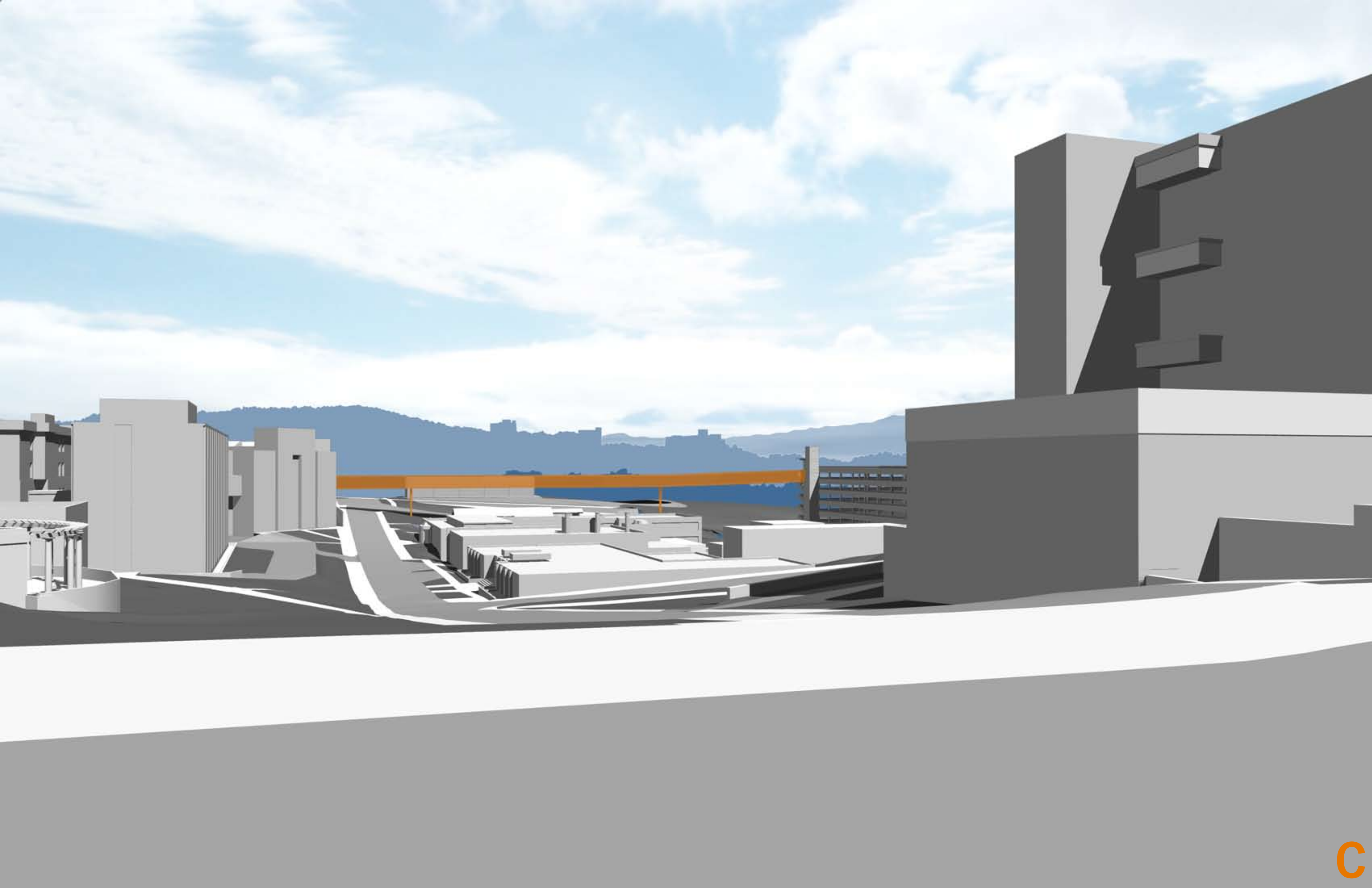


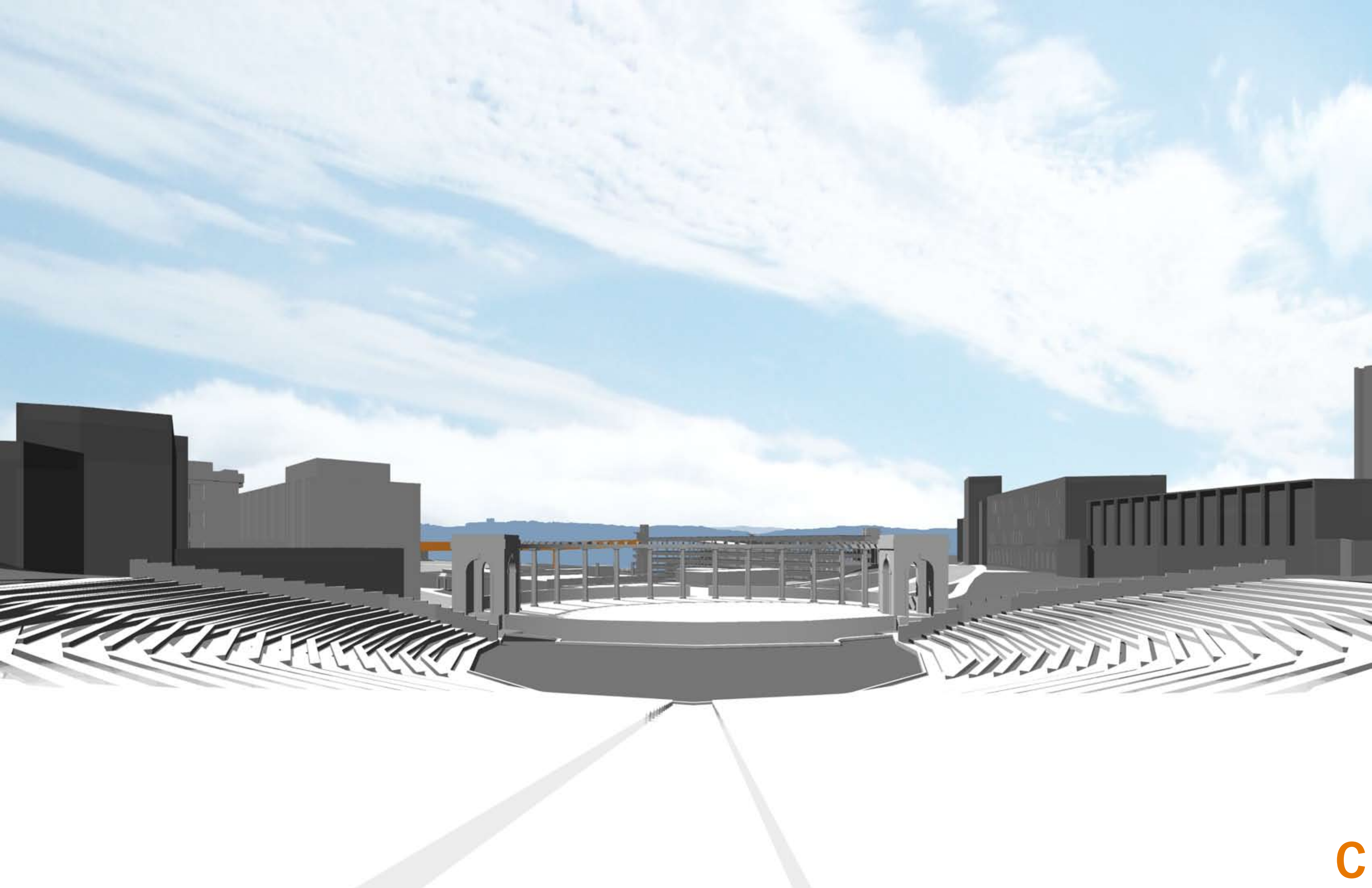


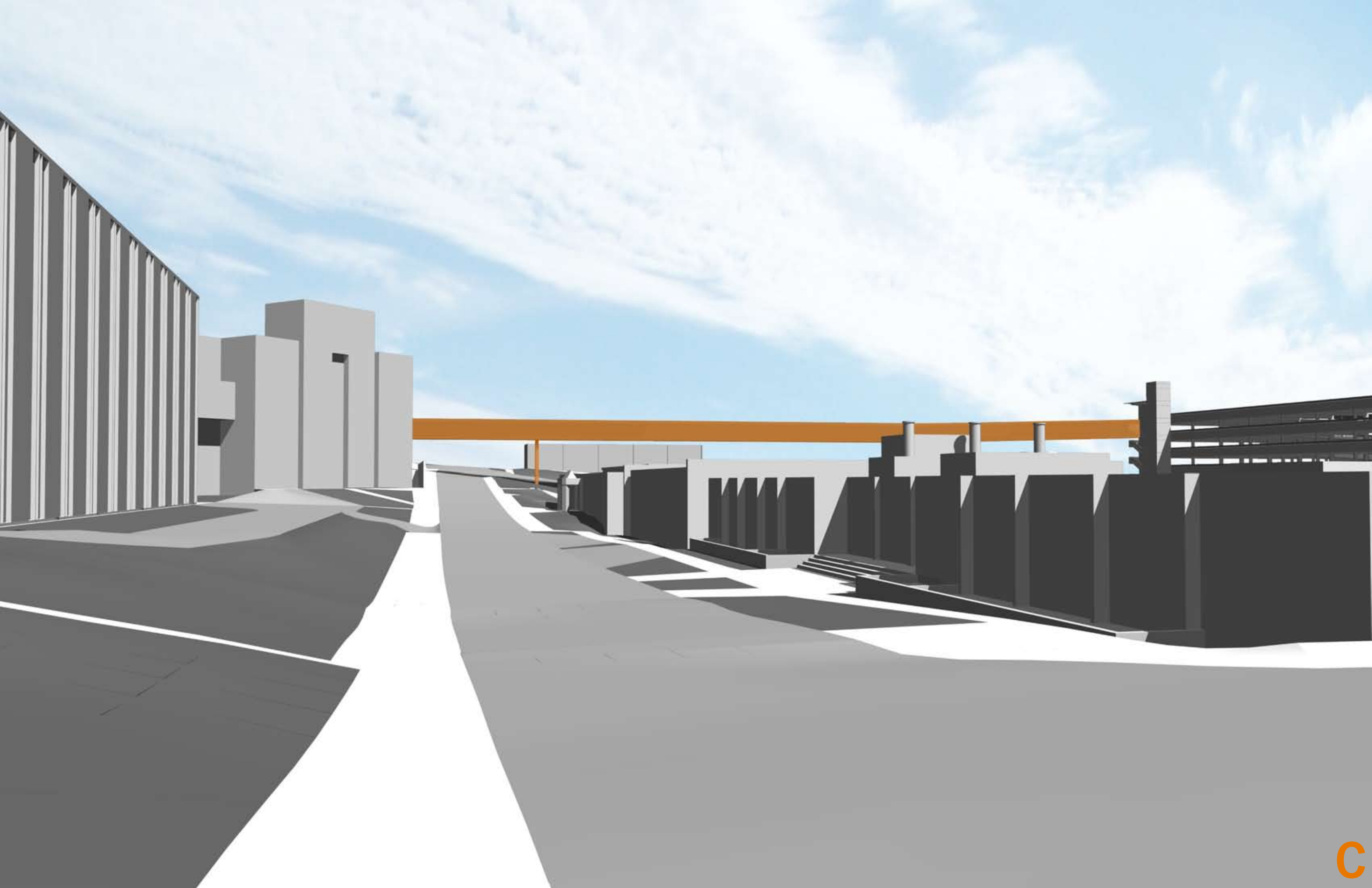


skywalk C



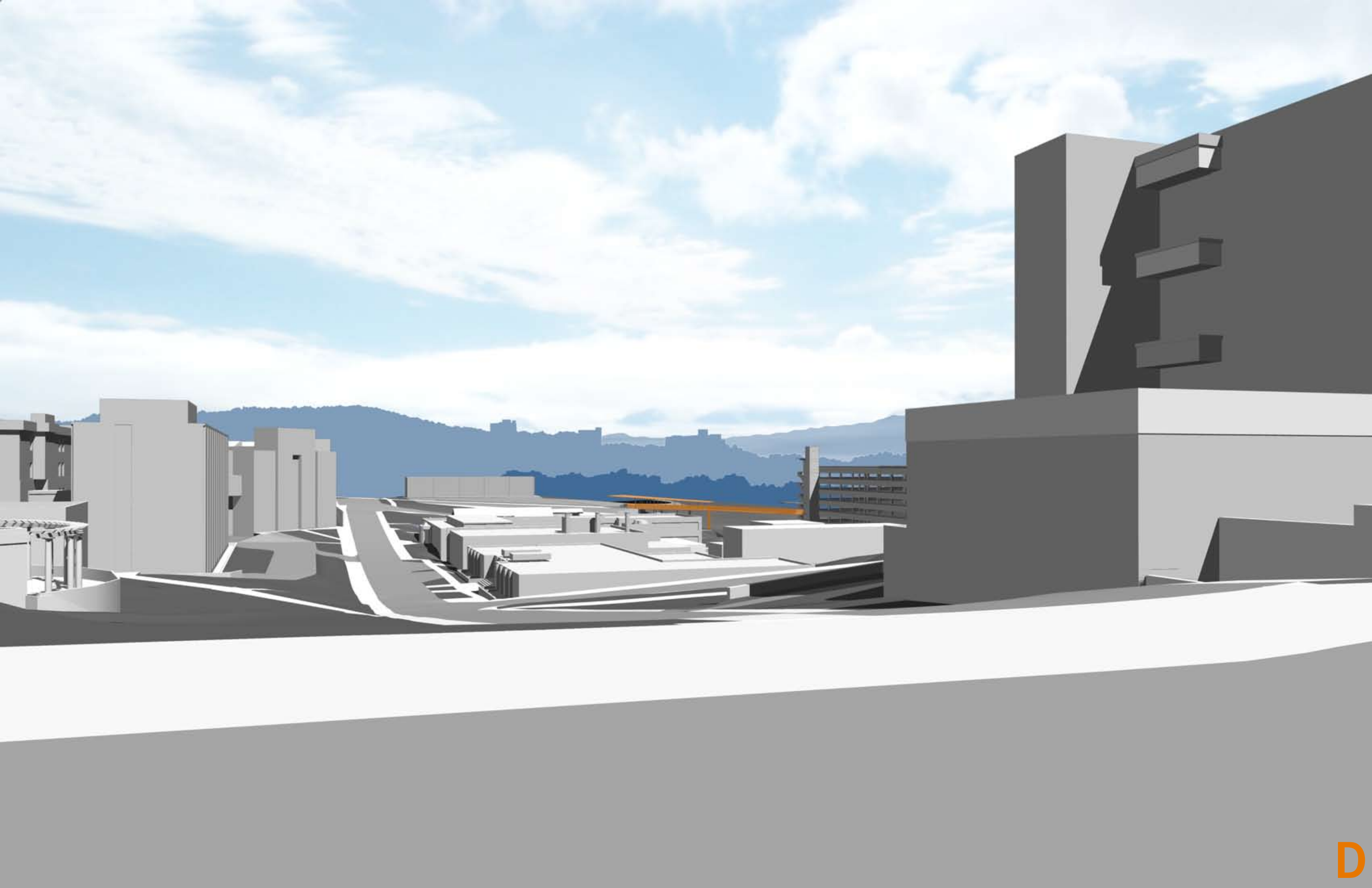


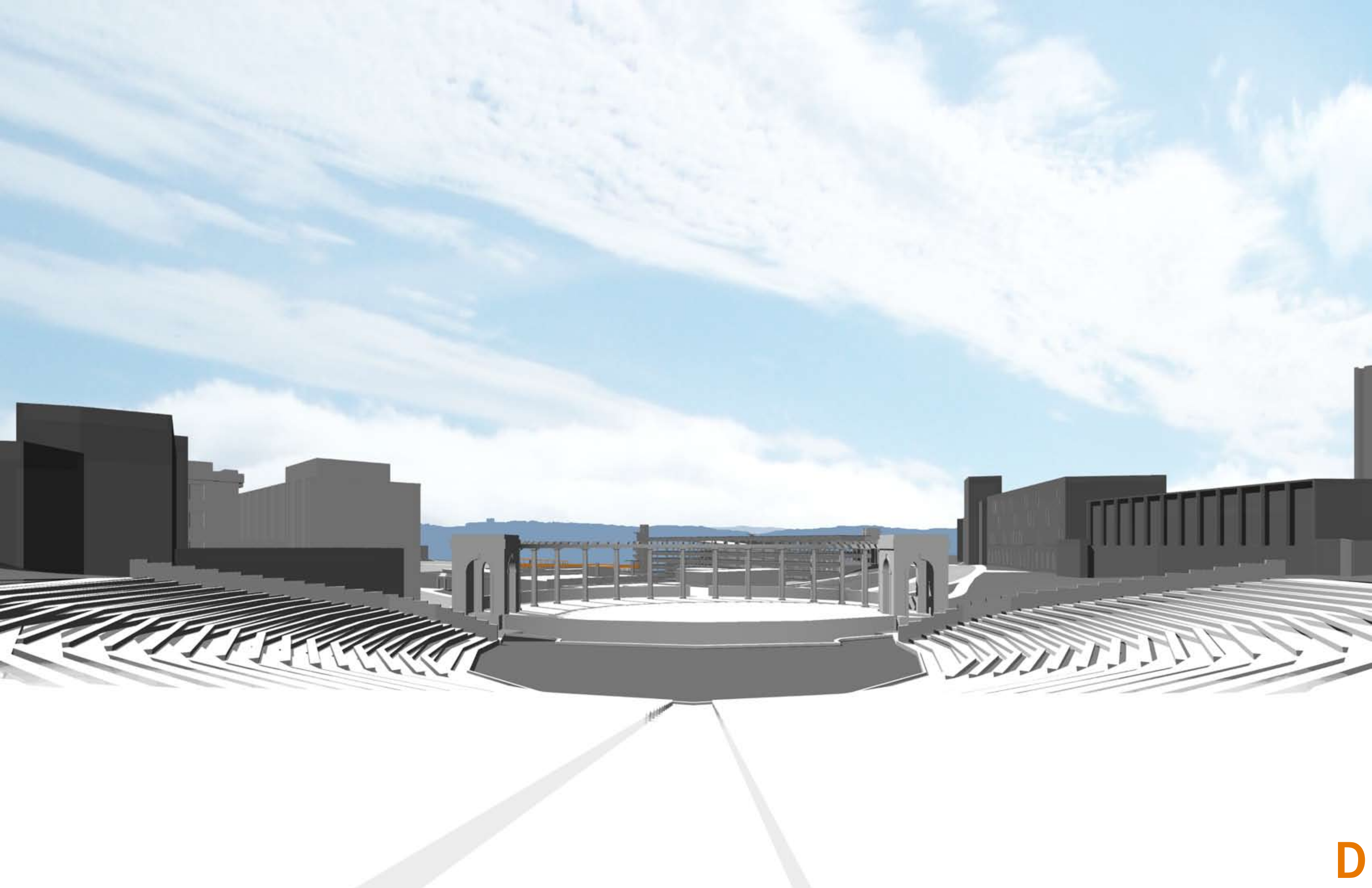




skywalk D

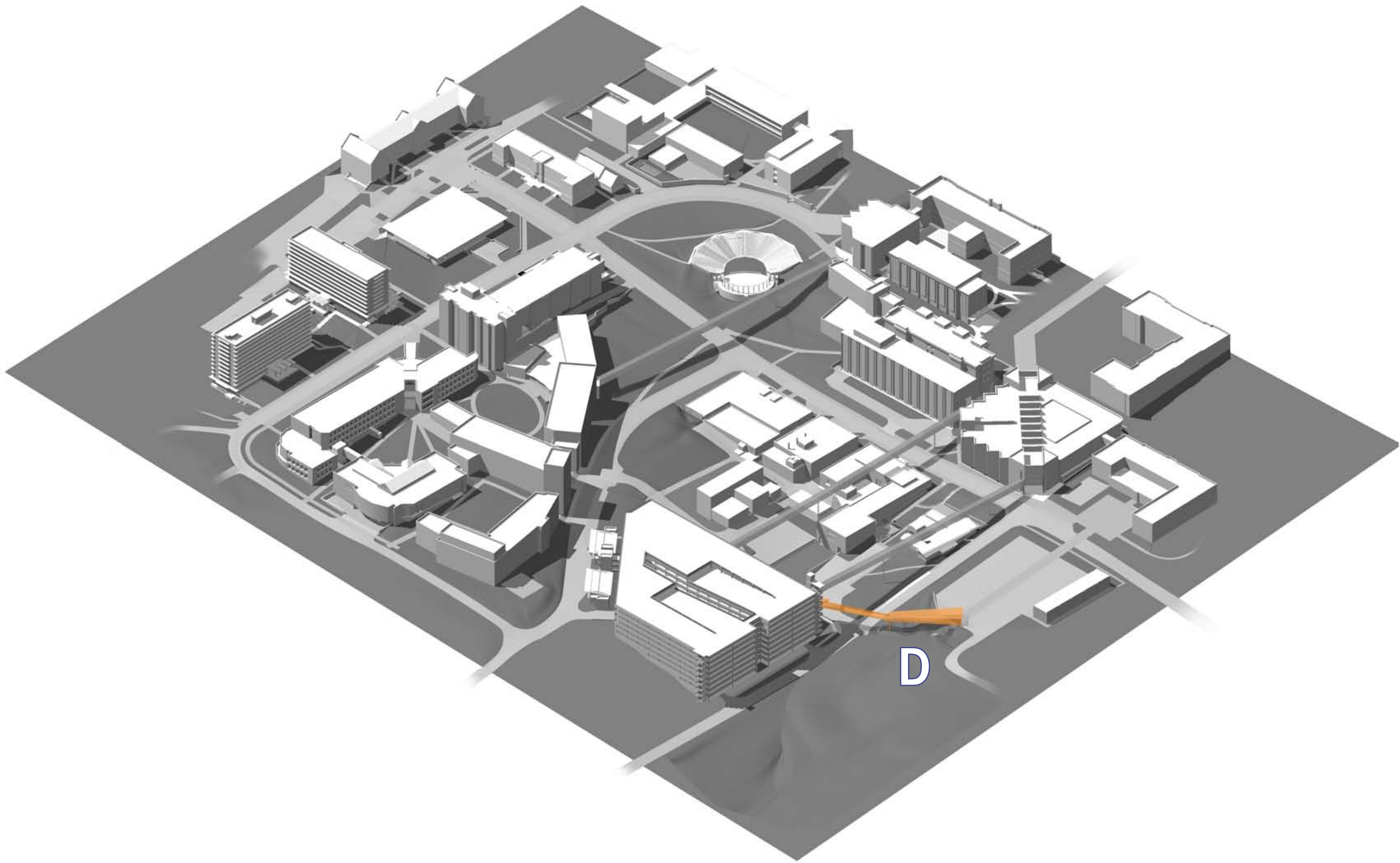


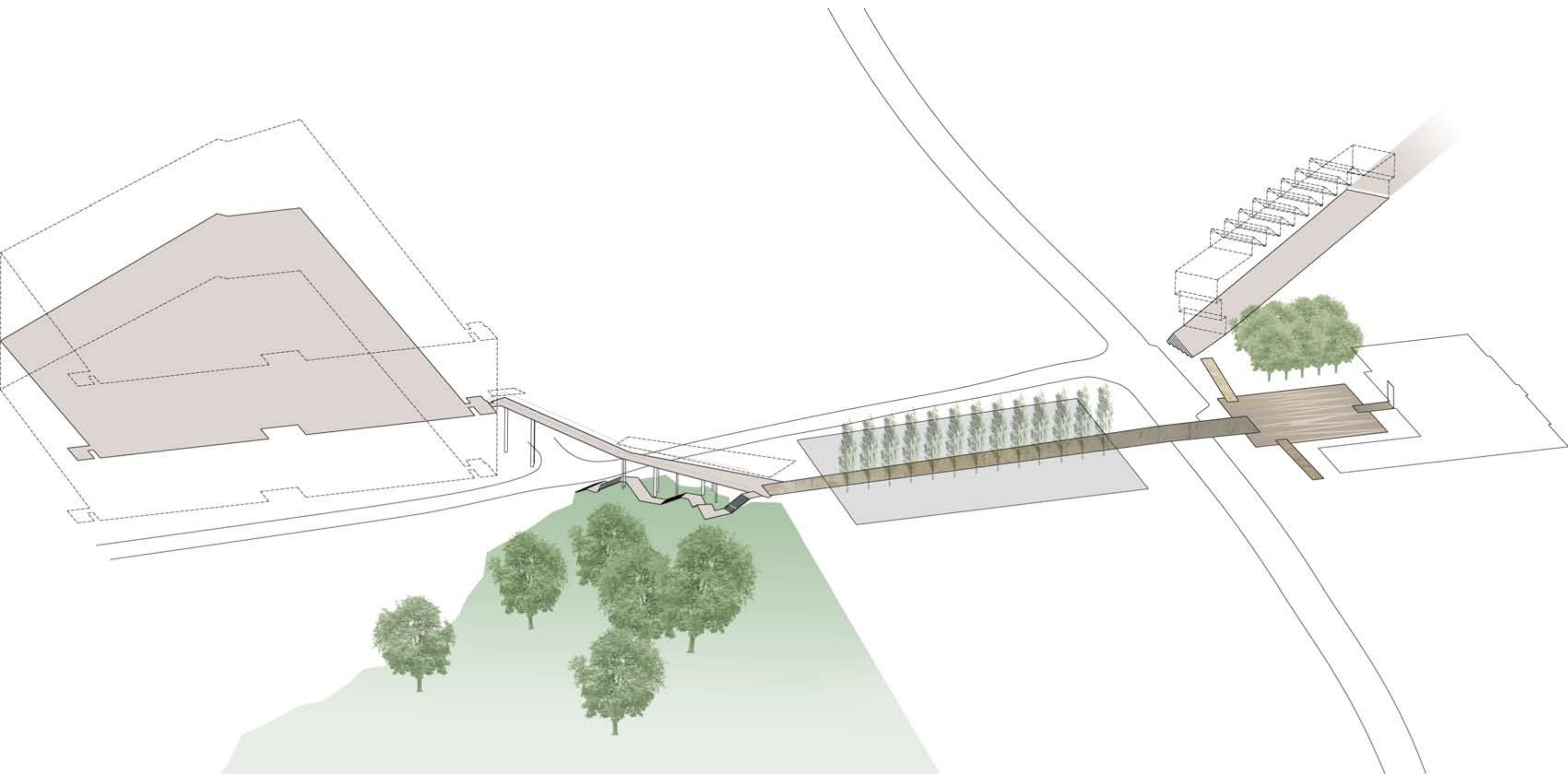






best option





Harmon Avenue Garage

Bell Engineering Atrium
(leads to Historic Core)

path to new
Engineering Hall Plaza

