

## **DIVISION 12 – FURNISHINGS**

### **12 00 00 FURNISHINGS**

#### **12 01 00 Operation and Maintenance of Furnishings**

- 12 01 10 Operation and Maintenance of Art
- 12 01 20 Operation and Maintenance of Window Treatments
- 12 01 30 Operation and Maintenance of Casework
- 12 01 40 Operation and Maintenance of Furnishings and Accessories
- 12 01 50 Operation and Maintenance of Furniture
- 12 01 60 Operation and Maintenance of Multiple Seating
- 12 01 90 Operation and Maintenance of Other Furnishings

#### **12 05 00 Common Work Results for Furnishings**

- 12 05 13 Fabrics

#### **12 06 00 Schedules for Furnishings**

- 12 06 10 Schedules for Art
- 12 06 20 Schedules for Window Treatments
  - 12 06 20.13 Window Treatment Schedule
- 12 06 30 Schedules for Casework
  - 12 06 30.13 Manufactured Casework Schedule
- 12 06 40 Schedules for Furnishings and Accessories
  - 12 06 40.13 Furnishings Schedule
- 12 06 50 Schedules for Furniture
- 12 06 60 Schedules for Multiple Seating
- 12 06 90 Schedules for Other Furnishings

#### **12 08 00 Commissioning of Furnishings**

### **12 10 00 ART**

#### **12 11 00 Murals**

- 12 11 13 Photo Murals
- 12 11 16 Sculptured Brick Panels
- 12 11 23 Brick Murals
- 12 11 26 Ceramic Tile Murals
- 12 11 33 Trompe l'oeil

#### **12 12 00 Wall Decorations**

- 12 12 13 Commissioned Paintings
- 12 12 16 Framed Paintings
- 12 12 19 Framed Prints
- 12 12 23 Tapestries
- 12 12 26 Wall Hangings

#### **12 14 00 Sculptures**

- 12 14 13 Carved Sculpture

12 14 16 Cast Sculpture  
12 14 19 Constructed Sculpture  
12 14 23 Relief Art

**12 17 00 Art Glass**  
12 17 13 Etched Glass  
12 17 16 Stained Glass

**12 19 00 Religious Art**

**SECTION 12 20 00**  
**WINDOW TREATMENTS**

CONSULTANT DESIGN GUIDELINE

COORDINATION: All classrooms and offices to have window treatments. Verify window treatment with Facilities Management Planning Group during design development. Unless otherwise directed, indicate in the base bid to furnish all classroom windows with audio-visual blinds or acceptable window coverings.

END SECTION

12 21 00 Horizontal Louver Blinds  
    12 21 13.13 Metal Horizontal Louver Blinds  
    12 21 13.23 Wood Horizontal Louver Blinds  
    12 21 13.33 Plastic Horizontal Louver Blinds  
12 21 16 Vertical Louver Blinds  
    12 21 16.13 Metal Vertical Louver Blinds  
    12 21 16.23 Wood Vertical Louver Blinds  
    12 21 16.33 Plastic vertical Louver Blinds  
12 21 23 Roll-Down Blinds  
12 21 26 Black-Out Blinds

**12 22 00 Curtains and Drapes**  
12 22 13 Draperies  
12 22 16 Drapery Track and Accessories

**12 23 00 Interior Shutters**

**12 24 00 Window Shades**  
12 24 13 Motorized Drapery Rods

**12 25 00 Window Treatment Operating Hardware**

12 25 13 Motorized Drapery Hardware

**12 30 00 CASEWORK**

**12 31 00 Manufactured Metal Casework**

12 31 16 Manufactured Metal Sandwich Panel Casework

**12 32 00 Manufactured Wood Casework**

12 32 13 Manufactured Wood-Veneer-Faced Casework

12 32 16 Manufactured Plastic-Laminate-Clad Casework

**12 34 00 Manufactured Plastic Casework**

12 34 16 Manufactured Solid-Plastic Casework

**12 35 00 Specialty Casework**

12 35 17 Bank Casework

12 35 25 Hospitality Casework

12 35 30 Residential Casework

12 35 30.13 Kitchen Casework

12 35 30.23 Bathroom Casework

12 35 30.43 Dormitory Casework

12 35 33 Utility Room Casework

12 35 50 Educational/Library Casework

12 35 50.13 Educational Casework

12 35 50.53 Library Casework

12 35 50.56 Built-In Study Carrels

12 35 53 Laboratory Casework

12 35 53.13 Metal Laboratory Casework

12 35 53.16 Plastic-Laminate-Clad Laboratory Casework

12 35 53.19 Wood Laboratory Casework

12 35 53.23 Solid-Plastic Laboratory Casework

12 35 59 Display Casework

12 35 70 Healthcare Casework

12 35 70.13 Hospital Casework

12 35 70.16 Nurse Station Casework

12 35 70.19 Exam Room Casework

12 35 70.74 Dental Casework

12 35 91 Religious Casework

**12 36 00 Countertops**

12 36 13 Concrete Countertops

12 36 16 Metal Countertops

12 36 19 Wood Countertops

12 36 23 Plastic Countertops

12 36 23.13 Plastic-Laminate-Clad Countertops

12 36 40 Stone Countertops

12 36 53 Laboratory Countertops

- 12 36 61 Simulated Stone Countertops
  - 12 36 61.13 Cultured Marble
  - 12 36 61.16 Solid Surfacing Countertops
  - 12 36 61.19 Quartz Surfacing Countertops

## **12 40 00 FURNISHINGS AND ACCESSORIES**

### **12 41 00 Office Accessories**

- 12 41 13 Desk Accessories

### **12 42 00 Table Accessories**

- 12 42 13 Ceramics
- 12 42 16 Flatware
  - 12 42 16.13 Silverware
- 12 42 19 Hollowware
- 12 42 23 Glassware
- 12 42 26 Table Linens
  - 12 42 26.13 Napery

### **12 43 00 Portable Lamps**

- 12 43 13 Lamps
  - 12 43 13.13 Desk Lamps
  - 12 43 13.16 Table Lamps
  - 12 43 13.19 Floor Lamps

### **12 44 00 Bath Furnishings**

- 12 44 13 Bath Linens
  - 12 44 13.13 Bath Mats
  - 12 44 13.16 Bath Towels
- 12 44 16 Shower Curtains

### **12 45 00 Bedroom Furnishings**

- 12 45 13 Bed Linens
  - 12 45 13.13 Blankets
  - 12 45 13.16 Comforters
- 12 45 16 Pillows

### **12 46 00 Furnishing Accessories**

- 12 46 13 Ash Receptacles
- 12 46 16 Bowls
- 12 46 19 Clocks
- 12 46 23 Decorative Crafts
- 12 46 26 Decorative Screens
- 12 46 29 Vases
- 12 46 33 Waste Receptacles

### **12 48 00 Rugs and Mats**

- 12 48 13 Entrance Floor Mats and Frames
  - 12 48 13.13 Entrance Floor Mats

- 12 48 13.16 Entrance Floor Mat Frames
- 12 48 16 Entrance Floor Grilles
- 12 48 19 entrance Floor Gratings
- 12 48 23 Entrance Floor Grids
- 12 48 26 Entrance Tile
- 12 48 43 Floor Mats
  - 12 48 43.13 Chair Mats
- 12 48 53 Rugs
  - 12 48 53.13 Runners
  - 12 48 53.16 Oriental Rugs

## **SECTION 12 50 00**

### **FURNITURE**

#### CONSULTANT DESIGN GUIDELINE

Any furniture vendor MUST furnish to FAMA Architect and Fire Marshal the furniture layout for any classroom, lecture hall, or place of assembly prior to any furniture being ordered or installed per any contract. This includes fixed seats, fixed tables, fixed tablet arm desks, or fixed seating of any type.

Requirements. Obtain requirements for furnishings from Facilities Management.

Furnishing Schedule: During the construction development stage, prepare and submit a schedule for movable and fixed furnishings to Facilities Management. Include any movable furniture or equipment necessary for the proper functioning of the building.

Furnishing Budget: Provide a separate budget figure for furnishings.

Construction Contract: Movable furniture and equipment do not have to be included in the contract documents, and may be a separate bid item. Verify with Facilities Management.

#### END SECTION

- 12 51 00 Office Furniture**
- 12 51 16 Case Goods
  - 12 51 16.13 Metal Case Goods
  - 12 51 16.16 Wood Case Goods
  - 12 51 16.19 Plastic-Laminate-Clad Case Goods
- 12 51 19 Filing Cabinets
  - 12 51 19.13 Lateral Filing Cabinets
  - 12 51 19.16 Vertical Filing Cabinets
- 12 51 83 Custom Office Furniture

## **12 52 00 Seating**

12 52 13 Chairs  
12 52 19 Upholstered Seating  
12 52 23 Office Seating  
12 52 70 Healthcare Seating  
12 52 83 Custom Seating

**12 53 00 Retail Furniture**

12 53 83 Custom Retail Furniture

**12 54 00 Hospitality Furniture**

12 54 13 Hotel and Motel Furniture  
12 54 16 Restaurant Furniture  
12 54 83 Custom Hospitality Furniture

**12 55 00 Detention Furniture**

12 55 13 Detention Bunks  
12 55 16 Detention Desks  
12 55 19 Detention Stools  
12 55 23 Detention Tables  
12 55 26 Detention Safety Clothes Hooks  
12 55 83 Custom Detention Furniture

**12 56 00 Institutional Furniture**

12 56 33 Classroom Furniture

Consultant Design Guideline

Classroom furniture will vary depending on the size and function of the room; however, most teaching rooms will utilize tables that are 60 inches wide by 20 inches deep allowing two chairs per table. The current manufacturer is KI and the style is Trek with Starlight Silver Metallic legs. The laminate color will vary to coordinate with the décor of the room.

**12 56 39 Lecterns**

CONSULTANT DESIGN GUIDELINE

The lectern is currently purchased from Today's Office and is a Steelcase series 7 – rectangular 70x29x29, universal adjustable height. AV/IT components for the lectern shall be purchased from Killian Digital, LLC.

**12 56 43 Dormitory Furniture**

**12 56 51 Library Furniture**

12 56 51.13 Book Shelves  
12 56 51.16 Study Carrels  
12 56 51.19 Index Card File Cabinets

12 56 52 Audio-Visual Furniture  
12 56 53 Laboratory Furniture  
12 56 70 Healthcare Furniture  
12 56 83 Custom Institutional Furniture

Standard Recycle Cabinet

See Appendix A – Standard Recycle Cabinet

**12 57 00 Industrial Furniture**

12 57 13 Welding Benches  
12 57 16 Welding Screens  
12 57 83 Custom Industrial Furniture

**12 58 00 Residential Furniture**

12 58 13 Couches and Loveseats  
    12 58 13.13 Futons  
12 58 16 Residential Chairs  
    12 58 16.13 Reclining Chairs  
12 58 19 Dining Tables and Chairs  
12 58 23 Coffee Tables  
12 58 26 Entertainment Centers  
12 58 29 Beds  
    12 58 29.13 Daybeds  
12 58 33 Dressers  
    12 58 33.13 Armoires  
12 58 36 Nightstands  
12 58 83 Custom Residential Furniture

**12 59 00 Systems Furniture**

12 59 13 Panel-Hung Component System Furniture  
12 59 16 Free-Standing Component System Furniture  
12 59 19 Beam System Furniture  
12 59 23 Desk System Furniture  
12 59 83 Custom Systems Furniture

**12 60 00 MULTIPLE SEATING**

**12 61 00 Fixed Audience Seating**  
12 61 13 Upholstered Audience Seating  
12 61 16 Molded-Plastic Audience Seating

**12 62 00 Portable Audience Seating**

12 62 13 Folding Chairs  
12 62 16 Interlocking Chairs  
12 62 19 Stacking Chairs

**12 63 00 Stadium and Arena Seating**

12 63 13 Stadium and Arena Bench Seating

12 63 23 Stadium and Arena Seats

**12 64 00 Booths and Tables**

**12 65 00 Multiple-Use Fixed Seating**

**12 66 00 Telescoping Stands**

12 66 13 Telescoping Bleachers

12 66 23 Telescoping Chair Platforms

**12 67 00 Pews and Benches**

12 67 13 Pews

12 67 23 Benches

**12 68 00 Seat and Table Assemblies**

12 68 13 Pedestal Tablet Arm Chairs

**12 90 00 OTHER FURNISHINGS**

**12 92 00 Interior Planters and Artificial Plants**

12 92 13 Interior Artificial Plants

12 92 33 Interior Planters

12 92 43 Interior Landscaping Accessories

**12 93 00 Site Furnishings**

CONSULTANT DESIGN GUIDELINE

See Facilities Management Planning Group, Campus Planning section on the web for detail information  
[http://planning.uark.edu/campus\\_landscape/index.html](http://planning.uark.edu/campus_landscape/index.html).

12 93 13 Bicycle Racks

CONSULTANT DESIGN GUIDELINE

See Facilities Management Planning Group, Campus Planning section on the web for detail information  
[http://planning.uark.edu/campus\\_landscape/index.html](http://planning.uark.edu/campus_landscape/index.html).



## **SECTION 12 93 23**

### **TRASH AND LITTER RECEPTORS**

See Facilities Management Planning Group, Campus Planning section on the web for detail information [http://planning.uark.edu/campus\\_landscape/index.html](http://planning.uark.edu/campus_landscape/index.html).

### CONSULTANT DESIGN GUIDELINE

Indicate on site plans locations for permanent screened trash dumpsters in an area adjacent to the building. Verify the number and size of dumpster units with Facilities Management.

See Appendix A – Standard Recycle Cabinet for info on recycle container info.

### END SECTION

## **12 93 33 Manufactured Planters**

## **12 93 43 Site Seating and Tables**

### **12 93 43.13 Site Seating**

### CONSULTANT DESIGN GUIDELINE

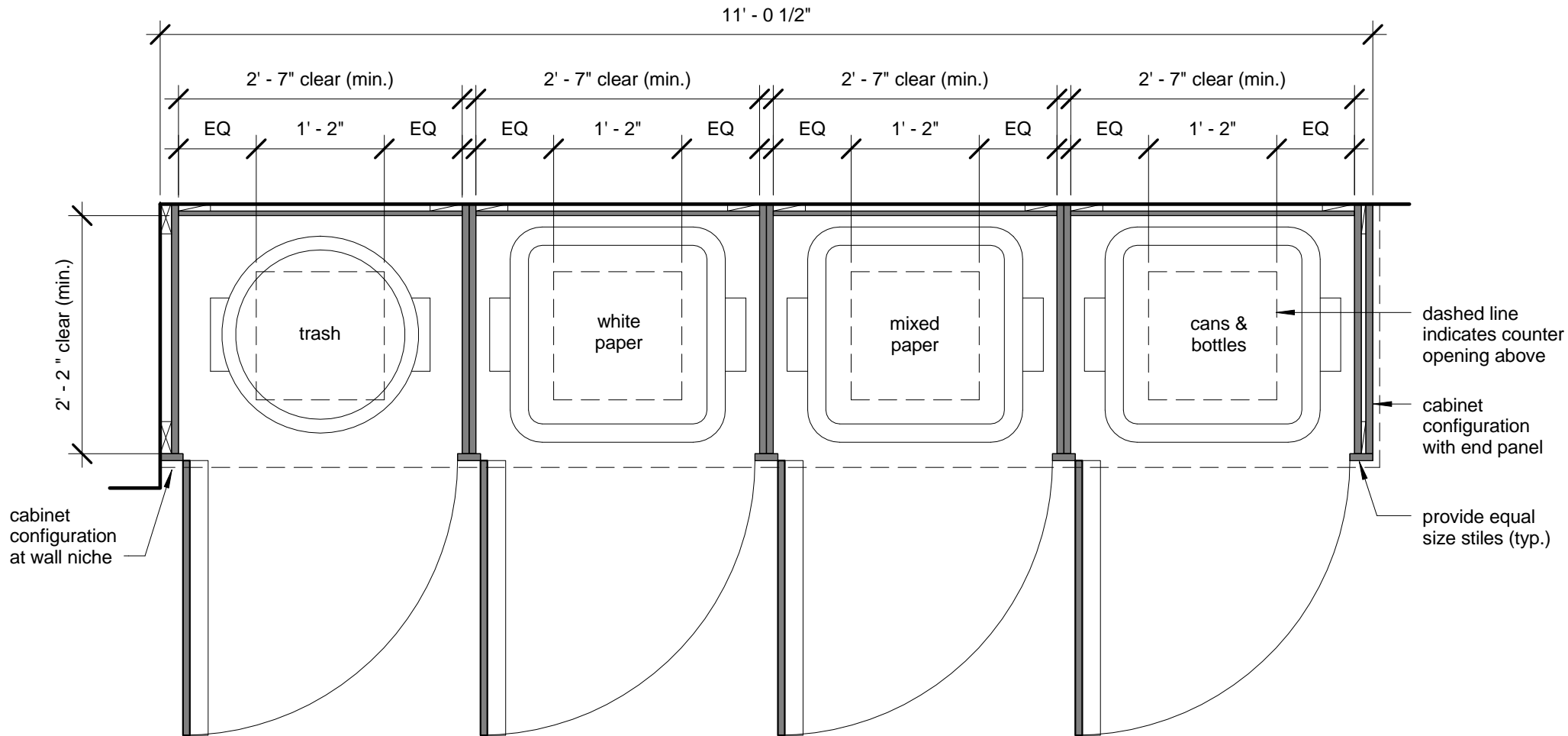
See Facilities Management Planning Group, Campus Planning section on the web for detail information [http://planning.uark.edu/campus\\_landscape/index.html](http://planning.uark.edu/campus_landscape/index.html).

## **12 93 43.53 Site Tables**

### CONSULTANT DESIGN GUIDELINE

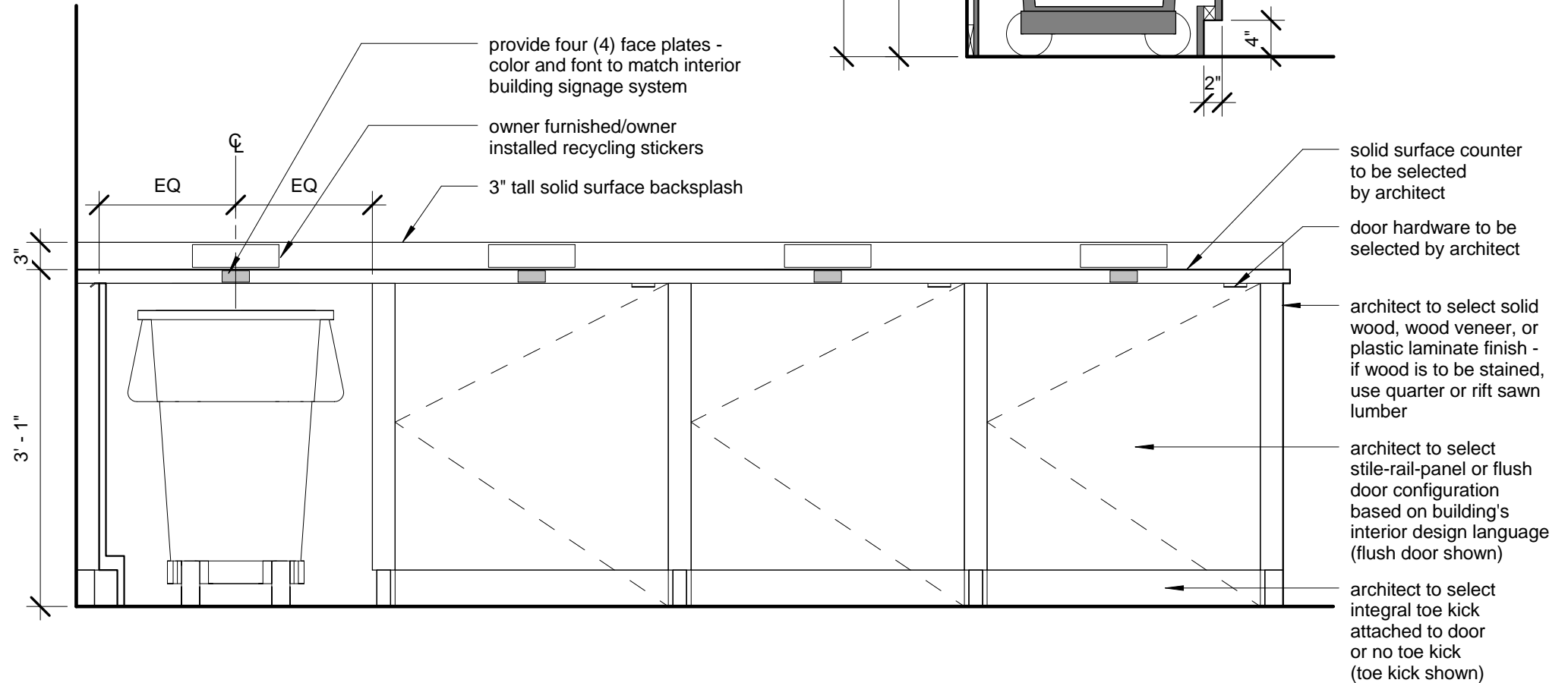
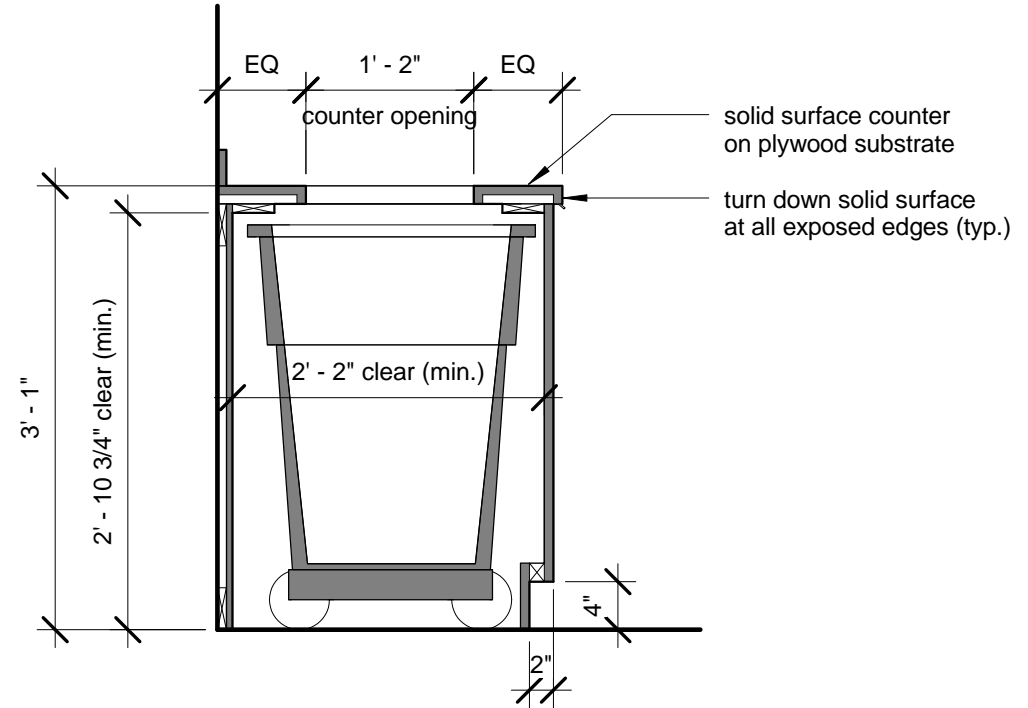
See Facilities Management Planning Group, Campus Planning section on the web for detail information [http://planning.uark.edu/campus\\_landscape/index.html](http://planning.uark.edu/campus_landscape/index.html).

UA Recycle Cabinet  
plan detail - configuration A



# UA Recycle Cabinet

front elevation and section - configuration A



# UA Recycle Cabinet

exploded axonometric - configuration A

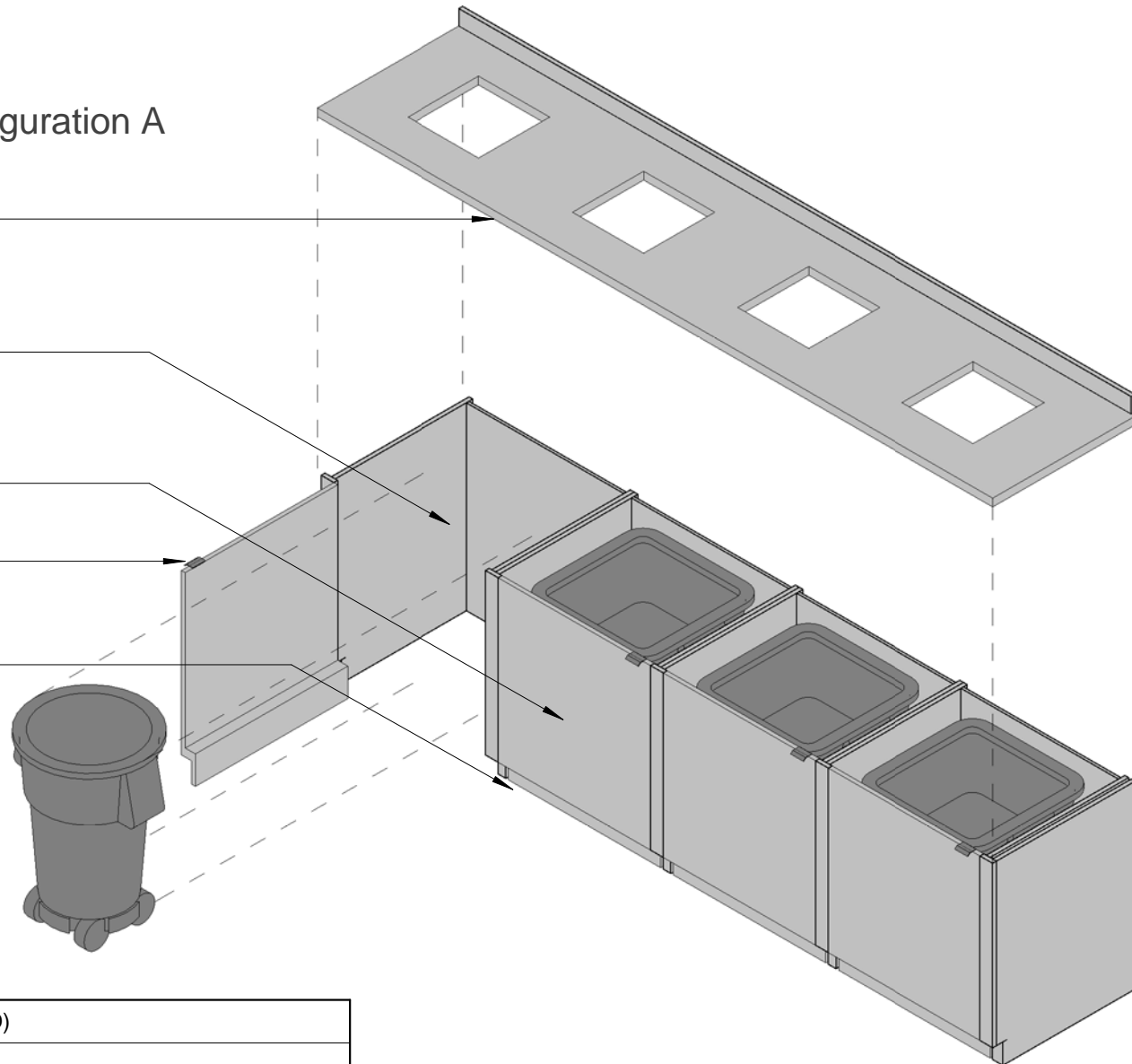
solid surface counter to be selected by architect

architect to select solid wood, wood veneer, or plastic laminate finish - if wood is to be stained, use quarter or rift sawn lumber

architect to select stile-rail-panel or flush door configuration based on building's interior design language (flush door shown)

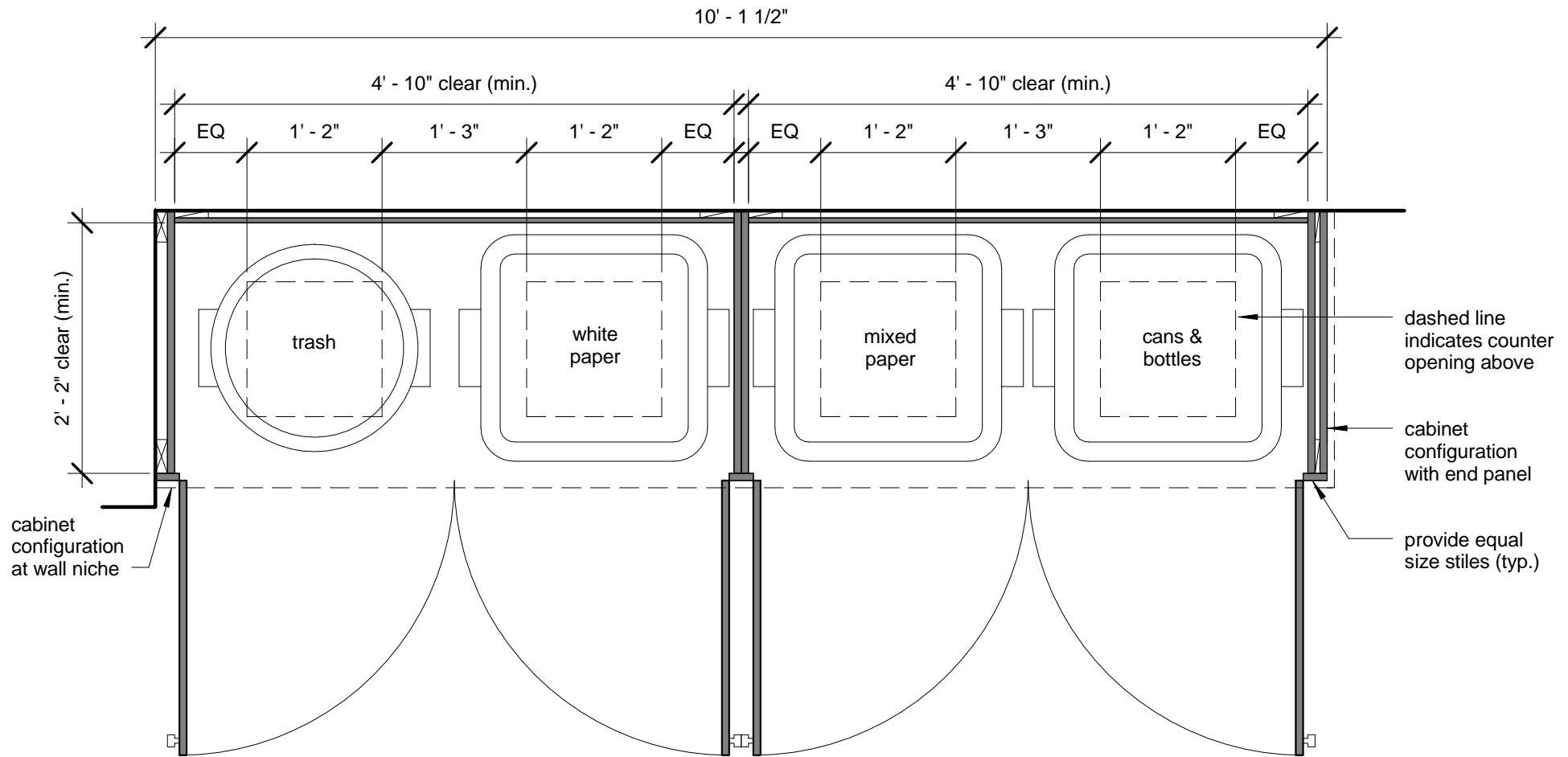
door hardware to be selected by architect

architect to select integral toe kick attached to door or no toe kick (toe kick shown)



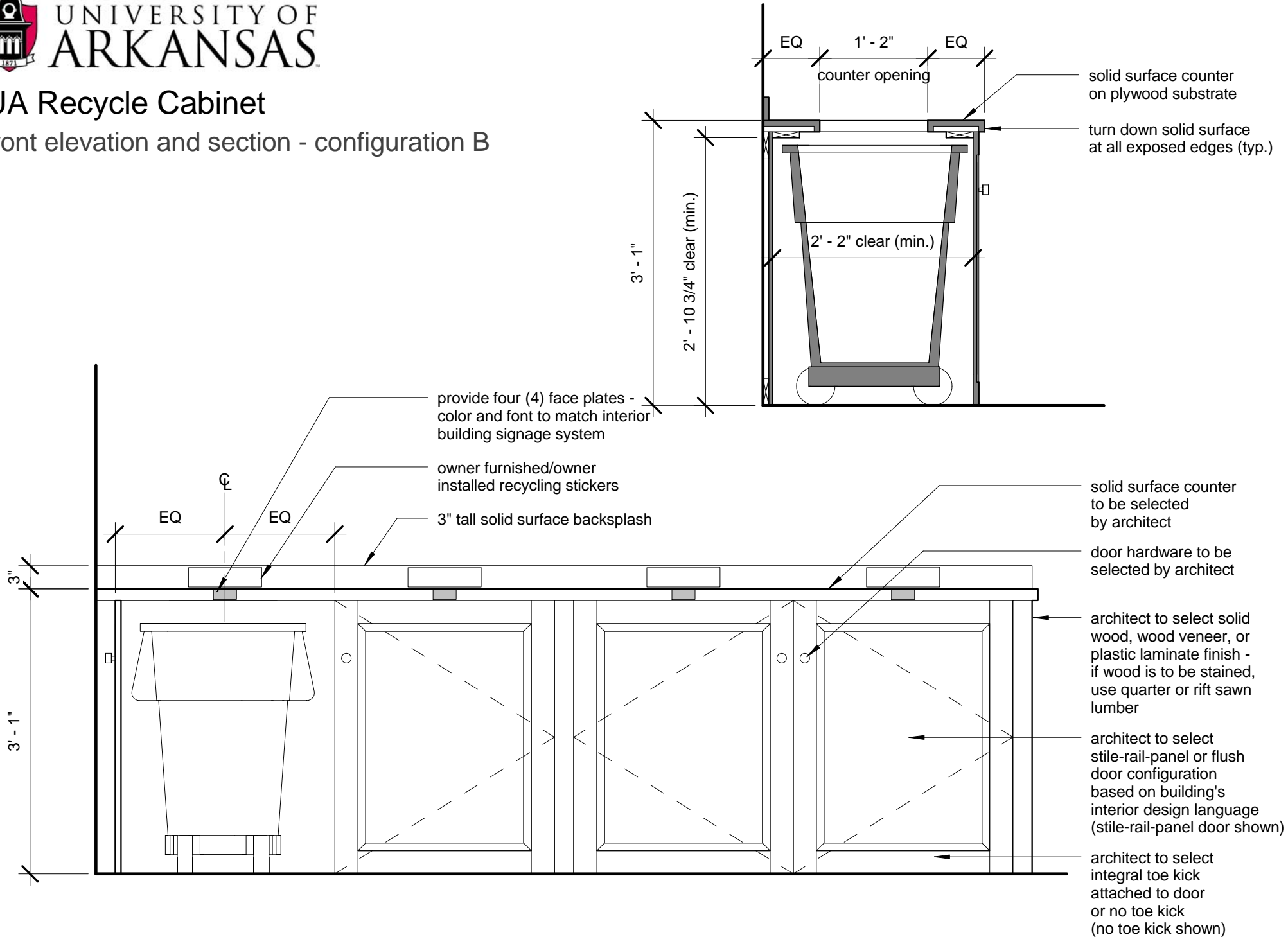
QTY.	CONTAINERS (OWNER FURNISHED)
x3	Rubbermaid square 40-gallon brute recycling container (per UA standard) 23 1/2" width x 28" depth (at handles) x 34" tall on square castor base
x1	Rubbermaid round 32-gallon brute trash container (per UA standard) 21 1/2" dia. x 24" depth (at handles) x 32 1/2" tall on round castor base

UA Recycle Cabinet  
plan detail - configuration B



# UA Recycle Cabinet

front elevation and section - configuration B



## UA Recycle Cabinet

exploded axonometric - configuration B

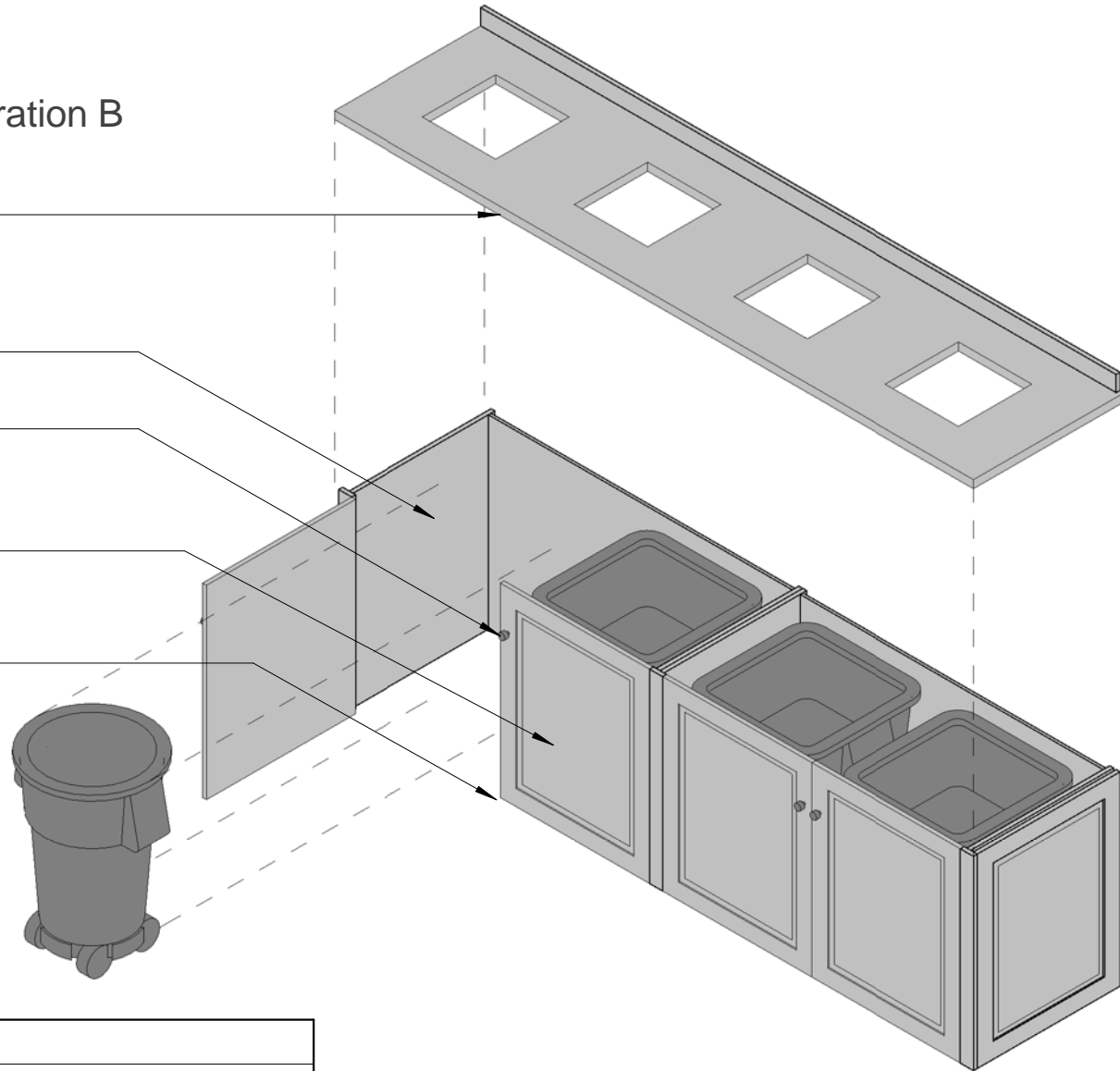
solid surface counter to be selected by architect

architect to select solid wood, wood veneer, or plastic laminate finish - if wood is to be stained, use quarter or rift sawn lumber

door hardware to be selected by architect

architect to select stile-rail-panel or flush door configuration based on building's interior design language (stile-rail-panel door shown)

architect to select integral toe kick attached to door or no toe kick (no toe kick shown)



QTY.	CONTAINERS (OWNER FURNISHED)
x3	Rubbermaid square 40-gallon brute recycling container (per UA standard) 23 1/2" width x 28" depth (at handles) x 34" tall on square castor base
x1	Rubbermaid round 32-gallon brute trash container (per UA standard) 21 1/2" dia. x 24" depth (at handles) x 32 1/2" tall on round castor base